

CHURCHILL CATTLE CO.'S FINAL



# *World Class* **BULL SALE**

**TUESDAY, JANUARY 27, 2026**  
1 P.M. AT THE RANCH IN MANHATTAN, MONTANA









*What a day this is - our official goodbye!*

We want to extend a very hearty welcome to all who want to attend our final bull sale Tuesday January 27! We look forward to sharing with you this set of bulls, ET heifers, pregnant recipis, commercial heifers, and embryos.

When we decided to sell our females in September we really wanted to save these young bulls for this regular January bull sale so that our rancher customers would have another opportunity to purchase bulls from us. We have had wonderful rancher customers over the years and we greatly appreciate each and every one of you! From the bottom of our hearts we say Thank You! We feel that we have saved our best set of bulls for last. This group is the culmination of 45 years of breeding here at Churchill. We look forward to sharing them with you. We will again offer the same services as we have done in the past. This includes free feed until spring, our regular delivery policy, and our first year breeding guarantee.

The offering will again feature sons of Churchill W4 Sherman whose sons topped so many sales across America in 2025. Once again there will be sons of CL 1 Domino 267K, Birdwell New Standard, and CL 1 Domino 0186H. This year's bull crop has many sons of some incredible new sires that are truly leading the industry: Churchill Stanfield, Churchill Smokey, Stellpflug Then Some, CSC Oshoto, and HH Advance 3107L. All of these sires were very carefully selected to make better cattle that will make you more money.

As we mentioned on the morning of day two of our dispersal we had 10 ET heifer calves and two tanks full of embryos that did not make it into the dispersal. These heifer calves are out of our best donors and include some of the best we have ever had! Some of the embryos are out of high selling donors in the dispersal and some are from our ET program of the last several years. We also are selling several pregnant recipis for fall calving in 2026. Our sale will round out with 10 commercial F1 heifer calves that were born and raised on our ranch out of our best herd bulls.

As we have tried to do our entire career we will help you as much as we can. We hate to leave this wonderful business but it was the right time for us to do it. We are very pleased that Colby and Brie Atchison of Four Diamond Livestock will lease our ranch and start their herd with Churchill genetics at this same location. After working for us for seven years it is the right time for Colby and Brie to start their own high quality program.

Once again, thank you from the bottom of our hearts for everything!! You cattle people are the very best!! Please come celebrate with us at a dinner Monday evening before the sale.

*We hope to see you at the sale!*

*Dale + Nancy Venhuizen*  
*Churchill Cattle Co.*

# SALE INFORMATION

---

## SALE DAY PHONES

Dale Venhuizen	406-580-6421
Nancy Venhuizen	406-580-3715
Ron Frye, <i>Ron Frye Marketing</i>	406-600-7514
Colby Atchison	406-320-0211
Megan Leep	406-600-4173
Shiloh Klein	701-891-9469

## AUCTIONEER

Joe Goggins	406-861-5664
-------------	--------------

## SALE REPRESENTATIVES

Aaron Friedt, <i>Hereford World</i>	406-853-4638
Kevin Murnin, <i>Western Livestock Journal</i>	406-853-4638
John Goggins, <i>Western Ag Reporter</i>	406-698-4159
Marc + Jill Hotchkiss, <i>Hereford America</i>	605-490-1409
Dustin Layton, <i>Layton Auction Services</i>	405-464-2455
Dwayne Dietz, <i>Special Assignment</i>	406-672-8500

## HEREFORD REPRESENTATIVES

Jack Ward	<i>AHA Executive Vice President</i>
Shane Bedwell, 620-886-1050	<i>AHA Chief Operating Officer</i>
Austin Snedden	<i>AHA President</i>

## SPECIAL THANK YOU

Trans Ova Genetics	<i>Advanced Reproductive Services</i>
Morgan Meisenheimer	<i>Graphic Design &amp; Photography</i>
Katie Songer	<i>Videography</i>

## VIDEOS

View videos at [ChurchillCattle.com](http://ChurchillCattle.com), [LiveAuctions.TV](http://LiveAuctions.TV) and on Superior Productions.

## HEALTH

The health of the herd is excellent. We guarantee that all sale cattle will ship to any state or Canadian province. All females are officially calfhood Bangs vaccinated. All cattle are on a complete pre-conditioning & herd health program.

Dr. Nick Johnson, <i>Veterinarian</i>	406-388-6275
---------------------------------------	--------------

## TERMS

Terms of the sale are cash unless other arrangements are made before the sale with Dale or Nancy Venhuizen. Every animal will be sold to the highest bidder with the auctioneer settling disputes. All cattle are the buyer's property as soon as sold and will be cared for a reasonable length of time at the buyer's risk. Neither Churchill Cattle Co. nor any person connected to this sale assumes any liability, legal or otherwise.

## GUARANTEE

All the bulls have been fed a high-roughage ration of Sainfoin hay, fed free choice, along with Purina's Top Gun bull pellet, which was fed twice per day. The bulls were also fed the proper balance of trace minerals to enhance fertility. They are not fed for maximum gain, but are grown out to be ready for work this spring and to have a long and useful life. In January, at sale time, the bulls are just hitting their stride. By late spring, they will be big, strong, and ready for work. We have had excellent results freezing semen on these yearling bulls after the sale, if so desired.

## WINTERING OF BULLS

We will keep any sale bull until April 1 and feed them at no cost to the buyer. We do believe it is good for your bulls to get adjusted to their new home as soon as possible. We recognize that the purchase of bulls is a major investment and we will do everything we can to make sure your bulls are ready for the breeding season.

## BULL DEVELOPMENT

All the bulls have been fed a high roughage ration that has the proper balance of trace minerals to enhance the bull's fertility. They are not fed for maximum gain but for future usefulness. In January at sale time, the bulls are just starting to hit their stride. By late spring they are big and strong and ready for the work that you have for them. All bulls will be semen tested. Last year all 12 yearling bulls we sent to get semen collected froze high quality semen.

## DELIVERY

We will pay one half the delivery cost to central points anywhere in the continental US on animals that sell for \$7,500 or more. For animals under \$7,500, delivery will be at cost. For Canadian buyers, we will deliver up to the nearest point of entry. Please contact Dale with any questions.

Bob Woolsey, <i>Woolsey Trucking</i>	406-670-1877
--------------------------------------	--------------



# SALE SCHEDULE

## MONDAY EVENING

6p.m. Dinner at the Hilton  
Garden Inn in Bozeman, MT.

## MONDAY AFTERNOON & TUESDAY MORNING

Viewing of sale cattle.  
Refreshments will be served on  
Monday afternoon.

## TUESDAY NOON

Lunch at the ranch

## TUESDAY 1 P.M.

*World Class Bull Sale*



CCC

# LOT INDEX

PAGE 8 CHURCHILLE FINALE 4304M

PAGE 10 POLLED SPRING BULLS

PAGE 33 HORNED SPRING BULLS

PAGE 47 FALL BULLS

PAGE 56 TWO-YEAR-OLD BULLS

PAGE 59 ET HEIFERS

PAGE 67 COMMERCIAL HEIFERS

PAGE 68 DONOR, PREGNANCIES & EMBRYOS

PAGE 75 OUR FUTURE PLANS

PAGE 76 SEMEN SIRES



# TRAVEL INFORMATION

---

## RANCH ADDRESS



1862 Yadon Rd.  
Manhattan, MT 59741

---

## DIRECTIONS



### FROM MANHATTAN

Go north through town on Hwy 346.

At the north end of Manhattan, you'll see a school on the left and on the right, a yellow light for people to cross the road. This is where you turn left onto Yadon Road.

Drive down Yadon Road for one mile - we're on the right!

---

## ACCOMODATIONS



### HOLIDAY INN EXPRESS

406-388-7100  
309 W Madison Ave.  
Belgrade, MT 59714

### EXTENDED STAY AMERICA

406-813-6115  
101 Abby Street  
Belgrade, MT 59714

### EVEN HOTEL

888-978-3705  
406 Belgrade BLVD  
Belgrade, MT 59714

### FORT THREE FORKS

406-285-3233  
10776 US-287  
Three Forks, MT 59752

---

## AIR TRAVEL



### BOZEMAN YELLOWSTONE INTERNATIONAL (BZN)

15 minute drive to the ranch.

*United - Southwest - Delta - Northwest - American - Alaska*

### BILLINGS LOGAN INTERNATIONAL (BIL)

2.5 hour drive to the ranch.

*United - Delta - American - Alaska - Allegiant - Cape Air*





# HOW TO ABSENTEE BID

Although we'd love for you to join us on sale day, we know it's a busy time of year and we all have to make the best choices for our health. If you can't make it to Manhattan, we have several great options for bidding in live time!

## HOW TO PARTICIPATE ON **LiveAuctions.TV**

### 1 CREATE AN ACCOUNT

Click "Register to Bid" on the top right corner of LiveAuctions.tv. Fill out the required information to bid online. Agree to the terms of service and finish with the "register" button.

### 2 REGISTER FOR A BUYER NUMBER

From the home page or the "all auctions" page, choose the sale you're interested in. When selected, click the "request a buyer number" button. Verify your email address with the email verification link. To verify your mobile number, click "send token". Follow the steps to authorize your mobile device and click "submit".

### 3 BID SUCCESSFULLY

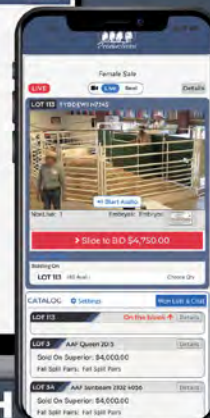
You will only have to complete the two-step verification process one time. After that, you will be able to immediately request a buyer number on any auction without verification. If you're a winning bidder, your lots will appear in your cart on the bottom of your screen. You will be contacted by the ranch or sale manager for your payment and shipping plans.

IF YOU NEED HELP REGISTERING TO BID  
OR TO VIEW THE AUCTION PLEASE  
CONTACT TECHNICAL SUPPORT  
**(682) 816-4900**  
OR  
**TECHSUPPORT@LIVEAUCTIONS.TV.**



**SCAN TO VIEW VIDEOS &  
REGISTER TO BID TODAY**  
or go to [superiorlivestock.com](http://superiorlivestock.com)  
& click purebred

## RESEARCH WITH CONFIDENCE



**BID WITH  
EASE**

**SUPERIORLIVESTOCK.COM | 800.422.2117**





# IMPORTANCE OF CALVING EASE

**CE**

If a bull has this icon we would be willing to use him on our first calf heifers and would expect a relatively easy calving experience. In order for a bull to receive this icon, he would have had to have a fairly low actual birth weight, been born unassisted and have a fairly high calving ease direct EPD.

## SALE BULLS WE CONSIDER CALVING EASE

01	06	28	30	37	39	44
46	69	70	72	73	74	85
89	94	95	96	101		

## PLEASE TAKE NOTE

### SALE ORDER

The sale order will be different from the catalog order. The sale order will be posted on our website two days before the sale or we can email/text it to you.

### PARTIAL INTEREST

For the few bulls we are keeping a partial ownership interest in, we welcome your call if you have any questions about the terms of sale of those particular bulls.

### FOOTNOTES & PHOTOS

We have only provided footnotes for bulls with pictures. But please know we are very proud of the high quality bulls who do not have footnotes/photos with them. In fact, many people have commented on the *consistent quality* of this years offering, bulls from top to bottom!

### EPDS & GENETIC DEFECTS

The EPDs in the catalog are accurate as of 12-8-2025.

For this sale we have included the percentile rankings in the breed in the right hand column.

If any animal is confirmed to be a carrier of a genetic defect it is indicated underneath the pedigree of the animal by the letters *DBC* or *MDC*.







A *World-Class* BULL WITH THE ABILITY TO BENEFIT THE  
HEREFORD BREED AND POSITIVELY IMPACT THE  
ENTIRE BEEF INDUSTRY AS A WHOLE.

# Finale

*We are very excited to present Churchill Finale as our Lot 1 bull for this Final World Class Bull Sale!*

This homozygous stud has the power, shape, hindquarter, and massive rib that are in demand today. His pigment is ideal, his feet are excellent, his scrotal development is outstanding and he looks like a proud herd bull.

His numbers are nearly perfect for what we value: calving ease, fast growth, incredibly strong maternal traits with very high udder quality and elite carcass merit. All of this places him in the top 1% for every dollar index. His full sister was a huge highlight of the dispersal, selling for \$170,000 to GKB. His dam has produced many great ones, but Finale is truly unique and different from the rest.

— Terms Announced Sale Day —

*Hoffman Ranch owns part of Finale and will be your possession partner.*







BAR JZ ON DEMAND - Sire of Lot 1



BR VALIDATED B413 6035 7098 - "The Super Cow" - Dam of Lots 1-5

## CHURCHILL FINALE 4304M ET

# 01

REG # 44654445 | HOMO POLL | 08/04/24

**SIRE** BAR JZ ON DEMAND (P44355795)  
RV VALOR 9444G ET x BAR JZ HANNAH 087B

**DAM** BR VALIDATED B413 6035 7098 (P43857421)  
EFBEEF BR VALIDATED B413 x BR BENNETT 4R V428 2101 6035

(Below) CHURCHILL LADY 4319M ET  
GKB's \$170K Full Sister to Finale

**CE**

BW 75  
WW 730

CED	6.9	22
BW	1.3	22
WW	67	12
YW	106	14
SC	1.8	3
MM	36	6
UDR	1.5	2
TEAT	1.5	4
CW	89	10
REA	.83	7
MRB	.77	1
\$BMI	539	2
SCHB	199	1







## *Polled* **SPRING BULLS**

## **HIGH QUALITY & BUILT FOR CATTLEMEN**

We are excited to present our final group of polled yearling bulls! These bulls are out of cows who were in high demand in our dispersal and have the ability to sire efficient, fast-gaining calves that perform for feedlot customers and hang the kind of carcass people enjoy at the steakhouse on Saturday night. *They're ready to work for you.*

This offering features outstanding new sire groups including Oshoto, Then Some, Smokey, & Laredo, along with the second year for sons of Sherman and New Standard — two of the most in-demand sire groups in the breed last spring. *This is a high-quality set of bulls built for cattle people!*







CHURCHILL JACK FROST 458M - \$41K Son of 7098



CHURCHILL SMOKEY 3128L - \$120K Son of 7098

## CHURCHILL DOMINO 5105N ET 02

REG # 44666893 | POLLED | 01/16/25

**SIRE** CL 1 DOMINO 267K 1ET (44347274)  
CL 1 DOMINO 0186H X CL 1 DOMINETTE 719E 1ET

**DAM** BR VALIDATED B413 6035 7098 (P43857421)  
EFBEEF BR VALIDATED B413 X BR BENNETT 4R Y428 2101 6035

CED	2.5	
BW	1.7	
WW	65	19
YW	102	21
SC	1.2	
MM	36	6
UDR	1.4	9
TEAT	1.4	13
CW	87	13
REA	1.02	2
MRB	.70	1
SBMI	464	10
SCHB	194	1

BW 82  
WW 772

## CHURCHILL GUNSMOKE 5106N ET 03

REG # 44666894 | HOMO POLL | 01/16/25

**SIRE** STELLPFLUG GUNSMOKE 222 ET (P44400396)  
JDH AH BENTON 8G ET X NJW 202C 4013 HOMEMAKER 90H ET

**DAM** BR VALIDATED B413 6035 7098 (P43857421)  
EFBEEF BR VALIDATED B413 X BR BENNETT 4R Y428 2101 6035

CED	5.6	
BW	-0.2	7
WW	58	
YW	89	
SC	1.1	
MM	33	16
UDR	1.5	2
TEAT	1.5	4
CW	79	
REA	.88	5
MRB	.64	1
SBMI	541	2
SCHB	175	4

BW 80  
WW 715

# LOTS 1-5 7098 Sons







*Chabot*

HAS BEEN GREAT SINCE DAY ONE!



## 04 CHURCHILL OSHOTO 574N ET

REG # 44667056 | HOMO POLL | 01/11/25

**SIRE** CSC 701 OSHOTO 316 (P44467816)

CSC 508 50B BRAUN 704 x CSC 502 LADY DEW 701

**DAM** BR VALIDATED B413 6035 7098 (P43857421)

EFBEEF BR VALIDATED B413 x BR BENNETT 4R Y428 2101 6035

CED	0.2	
BW	3.0	
WW	57	
YW	89	
SC	1.3	21
MM	39	3
UDR	1.4	9
TEAT	1.4	13
CW	71	
REA	.87	5
MRB	.30	15
SBMI	427	21
SCHB	141	22

He's been awesome since he was born, so we named him **CHABOT** after Cody & Shawna! This Oshoto x 7098 son oozes eye appeal, with thickness, structure & the right muscle shape. He has beautiful pigment, is clean-made & knows he is good. Oshoto won the major Canadian shows this fall because he's outstanding. 7098 is a legend because she produces bulls like this!

BW 81  
WW 761



CHURCHILL CHABOT 574N ET - Photo taken this last summer, July 2025





## CHURCHILL HERITAGE 5102N ET 05

REG # 44666891 | HOMO POLL | 01/16/25

**SIRE** CSC 701 OSHOTO 316 (P44467816)  
CSC 508 50B BRAWN 704 x CSC 502 LADY DEW 701

**DAM** BR VALIDATED B413 6035 7098 (P43857421)  
EFBEEF BR VALIDATED B413 x BR BENNETT 4R Y428 2101 6035

CED	3.0	
BW	2.2	
WW	57	
YW	92	
SC	1.7	4
MM	39	3
UDR	1.5	2
TEAT	1.5	4
CW	68	
REA	.61	
MRB	.60	2
\$BMI	529	2
SCHB	163	7

BW 78  
WW 866



**CSC 701 OSHOTO 316**  
Grand Champion Bull at  
Agribition & Toronto Royal  
Sire of Lots 4, 5, 8, 9 & 10



**BR VALIDATED  
B413 6035 7098**  
Dam of Lots 02-06

*Heritage* is a bull we're very proud of! He exemplifies what we've worked to accomplish over the years, which is why he earned his name. He does everything right and looks good doing it! He is a high-performance, homozygous bull with all the extras. You will appreciate his depth, square hip and how clean he is through his neck and sheath.

He reminds us a great deal of his sire, but with the added strengths that 7098 brings to the table. His EPD profile is exceptional, ranking in the top 5% for scrotal, fertility, milk, udder, teat, marbling, BMI and CHB.

*Heritage will make many friends and, as a result, sell a lot of semen!*







CHURCHILL STAMPEDE 486M ET - \$220K Full Brother to Lots 6 & 7



CHURCHILL SHERMAN 5155N ET - Lot 07

## 06 CHURCHILL SHERMAN 4511M ET

REG # 44700844 | HOMO POLL | 12/17/24

**SIRE** CHURCHILL W4 SHERMAN 2157K ET (P44378036)  
KCF BENNETT RESOLVE G595 *x* CHURCHILL LADY 079H ET

**DAM** CHURCHILL LADY 219K ET (P44378076)  
CHURCHILL DESPERADO 029H *x* BR VALIDATED B413 6035 7098

### HEIFER SAFE FULL BROTHER TO STAMPEDE!

A fabulous heifer bull with elite udder quality + top 1% Marbling out of the "Queen Bee" 219K! He is thick made, long bodied, with lots of quality. With his low birth and incredible marbling, he has great potential to move your cowherd in the right direction!

CED	11.2	5
BW	-1.7	3
WW	53	
YW	85	
SC	1.2	
MM	36	7
UDR	1.5	2
TEAT	1.6	1
CW	71	
REA	.71	15
MRB	.83	1
\$BMI	485	6
SCHB	178	3

**CE**

BW 70  
WW 706

## 07 CHURCHILL SHERMAN 5155N ET

REG # 44667255 | HOMO POLL | 02/02/25

**SIRE** CHURCHILL W4 SHERMAN 2157K ET (P44378036)  
KCF BENNETT RESOLVE G595 *x* CHURCHILL LADY 079H ET

**DAM** CHURCHILL LADY 219K ET (P44378076)  
CHURCHILL DESPERADO 029H *x* BR VALIDATED B413 6035 7098

### WHAT AN IMPACT HE'LL HAVE ON HIS NEW HERD!

This full brother to Stampede is super high quality with sensational EPDs. Like his brother, he is dark red with heavy pigment. He is clean-made, with exceptional muscle expression and plenty of length. He ranks in the top 2% for YW & scrotal, with elite carcass merit. He's in the top 2% for ribeye and top 1% for marbling, with a CHB of 201.

CED	-3.1	
BW	2.8	
WW	72	5
YW	122	2
SC	1.8	3
MM	36	8
UDR	1.3	
TEAT	1.4	13
CW	88	11
REA	1.02	2
MRB	.69	1
\$BMI	479	7
SCHB	201	1

BW 81  
WW 684

## LOTS 6-10 *Sons of* 219K





## CHURCHILL OSHOTO 555N ET 08

REG # 44667042 | SCURS | 01/07/25

**SIRE** CSC 701 OSHOTO 316 (P44467816)  
CSC 508 50B BRAWN 704 X CSC 502 LADY DEW 701

**DAM** CHURCHILL LADY 219K ET (P44378076)  
CHURCHILL DESPERADO 029H X BR VALIDATED B413 6035 7098

**MASSIVE OSHOTO WITH BIG TIME MARBLING!**

This massive-bodied beast has tons of quality. Just look at his rib shape, big top & shape from behind. There are very few young bulls with this much genuine dimension. His super dam, 219K, twice sold for more than \$170K. His numbers are really good, with top 5% fertility & milk, high udder scores, and top 3% marb.

CED	1.3	
BW	2.6	
WW	59	
YW	103	20
SC	1.6	6
MM	39	3
UDR	1.4	9
TEAT	1.4	13
CW	66	
REA	.42	
MRB	.50	3
SBMI	496	5
SCHB	146	17

BW 82  
WW 706



## CHURCHILL OSHOTO 5144N ET 09

REG # 44666927 | HOMO POLL | 01/30/25

**SIRE** CSC 701 OSHOTO 316 (P44467816)  
CSC 508 50B BRAWN 704 X CSC 502 LADY DEW 701

**DAM** CHURCHILL LADY 219K ET (P44378076)  
CHURCHILL DESPERADO 029H X BR VALIDATED B413 6035 7098

**ONE OF THE BEST BULLS WE HAVE RAISED!**

A good looking big-time performer with a 795 lb 205 day weight. He's exceptionally thick, shapely & long with excellent numbers. He's in the top 10% for nine key traits, including both dollar indexes. With his color, pigment, pedigree & maternal heritage, he offers a great deal. *He injured a hock this summer, so his natural service capabilities will depend on his progress.*

CED	1.2	
BW	4.5	
WW	69	8
YW	114	6
SC	1.7	4
MM	35	8
UDR	1.5	2
TEAT	1.4	13
CW	75	
REA	.49	
MRB	.44	5
SBMI	482	7
SCHB	155	11

BW 83  
WW 795



## CHURCHILL OSHOTO 5142N ET 10

REG # 44666925 | POLLED | 01/29/25

**SIRE** CSC 701 OSHOTO 316 (P44467816)  
CSC 508 50B BRAWN 704 X CSC 502 LADY DEW 701

**DAM** CHURCHILL LADY 219K ET (P44378076)  
CHURCHILL DESPERADO 029H X BR VALIDATED B413 6035 7098

*If you like your bulls big and burly with lots of performance, HERE IS YOUR GUY.* He is massive in his structure with plenty of red and pigment. His dam is incredible, and his sire has become a tremendous two-year-old. This bull ranks high in many areas, including the top 9% for BMI and top 14% for CHB.

CED	4.3	
BW	2.8	
WW	65	18
YW	108	11
SC	1.9	2
MM	43	1
UDR	1.4	9
TEAT	1.3	
CW	81	24
REA	.71	15
MRB	.27	18
SBMI	476	8
SCHB	149	15

BW 87  
WW 773



CSC 701 OSHOTO 316 - Grand at Agribition - Sire of Lots 4, 5, 8, 9 & 10





CHURCHILL LADY 571N ET - \$55,000 Sherman x 3121L Daughter



CHURCHILL LADY 575N ET - \$45,000 Then Some x 3121L Daughter



CHURCHILL LADY 5158N ET - \$27,500 Sherman x 3121L Daughter

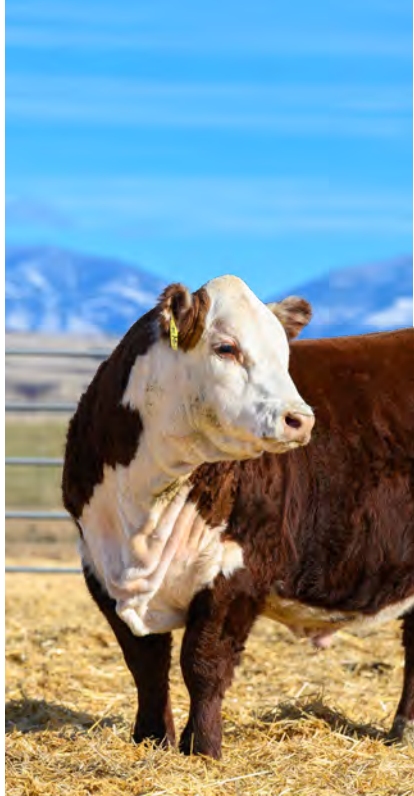


CHURCHILL LADY 3121L ET - GKB & Colyer's \$220K Dam of Lots 11-13

# LOTS 11-13 <sup>POLLED</sup> Sons of 3121L







11

## CHURCHILL STRIKE 4505M ET

11

REG # 44671976 | POLLED | 12/24/24

**SIRE** CHURCHILL W4 SHERMAN 2157K ET (P44378036)  
KCF BENNETT RESOLVE G595 X CHURCHILL LADY 079H ET

**DAM** CHURCHILL LADY 3121L ET (P44462186)  
RST FINAL PRINT 0016 X BR VALIDATED B413 6035 7098

### STRIKE FAST ON THIS RARE OPPORTUNITY!

In our long career, we've hardly ever raised a bull who offers what *Strike* does! First, stand back and take in his thickness, muscle shape and pigment. Then consider his elite numbers — low birth, high growth, strong milk with high udder scores and top 1% Ribeye and Marb! All of this puts him in the top 1% for both BMI and CHB. His dam was our high-selling female, and his sire is setting sales records.

CED	-0.6	
BW	1.1	19
WW	73	4
YW	113	6
SC	1.4	15
MM	36	7
UDR	1.4	9
TEAT	1.5	4
CW	102	2
REA	1.06	1
MRB	.74	1
SBMI	569	1
SCHB	215	1

BW 82  
WW 761

## CHURCHILL SHERMAN 4506M ET

12

REG # 44671977 | POLLED | 12/22/24

**SIRE** CHURCHILL W4 SHERMAN 2157K ET (P44378036)  
KCF BENNETT RESOLVE G595 X CHURCHILL LADY 079H ET

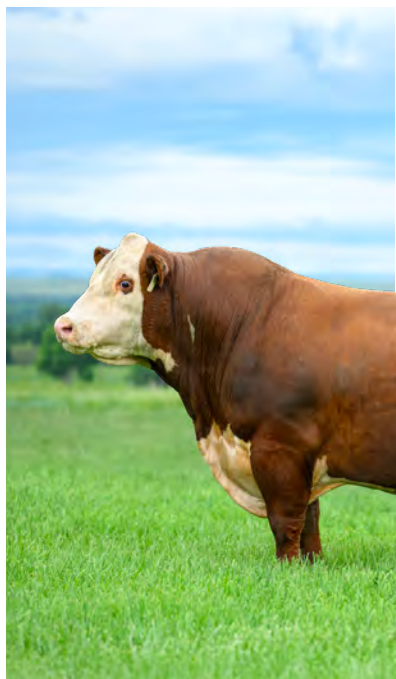
**DAM** CHURCHILL LADY 3121L ET (P44462186)  
RST FINAL PRINT 0016 X BR VALIDATED B413 6035 7098

### WANT PRIME-QUALITY? PUT HIM TO WORK!

Look at his pigment, body mass, thickness & overall quality! Negative birth with fast growth, extremely high udder scores, fabulous carcass + top 8% BMI & top 2% CHB. Want to raise prime-quality cattle? Put this guy to work!

CED	1.1	
BW	-0.1	8
WW	64	19
YW	99	
SC	1.2	
MM	35	10
UDR	1.5	2
TEAT	1.6	1
CW	89	10
REA	1.09	1
MRB	.61	2
SBMI	468	9
SCHB	184	2

BW 80  
WW 753







# Legacy

A TRULY UNIQUE  
**POLLED** STANFIELD x 3121 SON!



## 13 CHURCHILL LEGACY 5117N ET

REG # 44666903 | POLLED | 01/18/25

**SIRE** CHURCHILL STANFIELD 3122L (44462187)  
CHURCHILL ROUGHNECK 0280H ET x CHURCHILL LADY 890F

**DAM** CHURCHILL LADY 3121L ET (P44462186)  
RST FINAL PRINT 0016 x BR VALIDATED B413 6035 7098

CED	-0.6	
BW	3.7	
WW	75	3
YW	120	3
SC	1.6	6
MM	44	1
UDR	1.4	9
TEAT	1.5	4
CW	81	23
REA	.79	9
MRB	.48	4
\$BMI	473	8
SCHB	153	12

A truly unique polled Stanfield son out of a breed-leading \$220K dam. If you need a super-good, polled outcross herd bull, you just found him. Just look at his depth, thickness, color, markings and quality. His birth weight is in line, and he ranks in the top 10% for 12 traits. He could sell a lot of semen because of all these factors and will certainly help build a superior cowherd.

BW 80  
WW 710



CHURCHILL STANFIELD 3122L - Sire of Lot 13



## CCC JR WINCHESTER 5314N ET

# 14

REG # 44668204 | POLLED | 02/05/25

**SIRE** BR GKB WINCHESTER 1314 (44300997)

BR BELLE AIR E133 ET x BR ANASTASIA E117 ET

**DAM** CHURCHILL LADY 1221J ET (P44267908)

CHURCHILL BROADWAY 858F x BR VALIDATED B413 6035 7098

BW 80  
WW 584

CED	-0.4	
BW	2.7	
WW	66	14
YW	113	7
SC	2.0	1
MM	36	7
UDR	1.3	
TEAT	1.3	
CW	89	10
REA	.69	17
MRB	.65	1
SBMI	458	12
SCHB	188	2



CHURCHILL LADY 1221J ET - \$45,000 Dam of Lot 14

## CHURCHILL GUNSMOKE 5205N ET

# 15

REG # 44668212 | HOMO POLL | 02/24/25

**SIRE** STELLPFLUG GUNSMOKE 222 ET (P44400396)

JDH AH BENTON 8G ET x NJW 202C 4013 HOMEMAKER 90H ET

**DAM** CHURCHILL LADY 2322K ET (P44474315)

SR EXPEDITION 619G ET x BR VALIDATED B413 6035 7098

BW 75  
WW 874

CED	0.2	
BW	1.7	
WW	62	
YW	101	24
SC	1.5	10
MM	34	14
UDR	1.4	9
TEAT	1.5	4
CW	96	4
REA	.94	3
MRB	.49	4
SBMI	465	10
SCHB	182	2



CHURCHILL LADY 2322K - Dam of Lots 15 & 16

# LOTS 16-19 SONS OF *Then Some*







*Olympian*

A fabulous bull who looks and moves like the best Olympic athletes!

He has excellent muscle shape, a long, level top, and carries his head high & proud. He's backed by a wonderful cow who raised him as her first calf. She has the efficiency, fast growth and udder quality our very best Churchill Ladies exemplify. She'll be a cornerstone donor for Four Diamond Livestock & Abby Hill Farms. **OLYMPIAN** has a strong set of numbers, including fertility, growth, udder quality & excellent carcass — his homozygous polled trait is an added bonus!



## 16 CHURCHILL OLYMPIAN 579N

REG # 44667060 | HOMO POLL | 01/12/25

**SIRE** STELLPFLUG THEN SOME ET (P44493285)

JDH AH BENTON 8G ET x CHURCHILL LADY 0336H

**DAM** CHURCHILL LADY 2322K ET (P44474315)

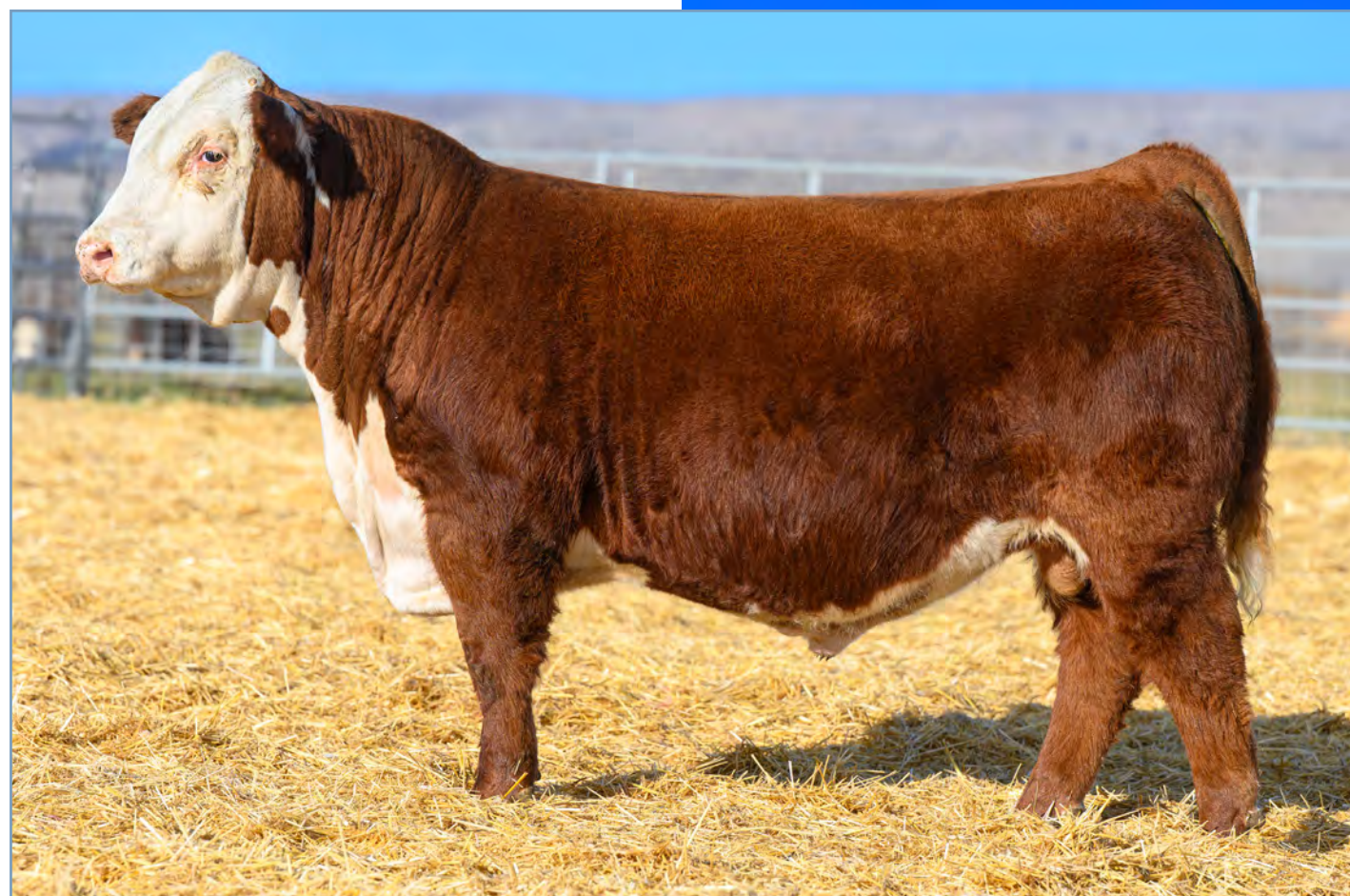
SR EXPEDITION 619G ET x BR VALIDATED B413 6035 7098

CED	-0.4	
BW	2.3	
WW	69	8
YW	99	
SC	1.5	10
MM	31	
UDR	1.4	9
TEAT	1.5	4
CW	79	
REA	.89	4
MRB	.22	
BW 82	SBMI 480	7
WW 865	SCHB 119	



CHURCHILL LADY 2322K - Dam of Lots 15 & 16





## CHURCHILL GOLD STANDARD 501N

# 17

REG # 44666883 | SCUR | 01/01/25

**SIRE** STELLPFLUG THEN SOME ET (P44493285)  
JDH AH BENTON 8G ET x CHURCHILL LADY 0336H

**DAM** CHURCHILL LADY 2153K (44378032)  
CL 1 DOMINO 0186H x CHURCHILL LADY 955G

Look at the power, three-dimensional shape and huge hindquarter on this guy. He weaned at 862 pounds and has maintained that performance since. His ability to convert feed and put on pounds in all the right places is truly remarkable. Clean-made with lots of neck extension, he carries himself like he knows he is good. His dam was a dispersal highlight, selling to NJW & GKB for \$67.5K and his numbers are excellent.

CED	-1.6	
BW	4.5	
WW	81	1
YW	130	1
SC	1.3	21
MM	24	
UDR	1.3	
TEAT	1.4	13
CW	110	1
REA	1.08	1
MRB	-.03	
\$BMI	445	15
SCHB	159	9

BW 82  
WW 862

THE  
*Gold Standard*  
FOR HEREFORD BULLS IN SO MANY WAYS!



CHURCHILL LADY 2153K - GKB & NJW's \$67.5K Dam of Lot 17







*Atlas*  
IS ONE OF THE BEST!



## 18 CHURCHILL ATLAS 512N

REG # 44666913 | SCUR | 01/01/25

**SIRE** STELLPFLUG THEN SOME ET (P44493285)  
JDH AH BENTON 8G ET x CHURCHILL LADY 0336H

**DAM** CHURCHILL LADY 6268D (P43703003)  
CHURCHILL RED BULL 200Z x CHURCHILL LADY 207Z ET

### ONE OF SHILOH'S FAVORITE BULLS!

It's easy to see why Shiloh loves this guy! This guy is deep and strong, with tremendous shape and power. He carries himself beautifully and has the look of a true herd bull. He is backed by strong maternal traits on both sides of his pedigree. This sire group is unique & Atlas is one of the best!

CED	5.1	
BW	1.4	23
WW	61	
YW	92	
SC	0.6	
MM	33	17
UDR	1.3	
TEAT	1.4	13
CW	75	
REA	.96	3
MRB	.01	
SBMI	416	
SCHB	115	

BW 74  
WW 741



STELLPFLUG THEN SOME - Sire of Lots 16-19



# CHURCHILL ATHLETE 5301N ET 19

REG # 44668998 | POLLED | 02/16/25

**SIRE** STELLPFLUG THEN SOME ET (P44493285)  
JDH AH BENTON 8G ET x CHURCHILL LADY 0336H

**DAM** CHURCHILL W4 LADY 2152K (P44378031)  
CL 1 DOMINO 0186H x CHURCHILL LADY 079H ET



CHURCHILL LADY 2152 - Dam of Lot 19

CED	4.4	
BW	1.1	19
WW	66	16
YW	103	19
SC	1.4	15
MM	30	
UDR	1.3	
TEAT	1.3	
CW	87	13
REA	.94	3
MRB	.33	12
\$BMI	505	4
SCHB	152	13

BW 80  
WW 697



## AN AWESOME BULL OUT OF AN AWESOME COW!

The dam of this bull is a sister to Sherman and she is about as good as it gets!!! She is working in the Roger Jennings herd in Illinois. I like the shape and power and structure of this bull. He has very high quality numbers with top 4 percent BMI and top 12 percent CHB.

# LOTS 20-25 SONS OF Oshoto



# CHURCHILL OSHOTO 506N 20

REG # 44666886 | POLLED | 01/01/25

**SIRE** CSC 701 OSHOTO 316 (P44467816)  
CSC 508 50B BRAUN 704 x CSC 502 LADY DEW 701

**DAM** CHURCHILL LADY 088H (44149893)  
NJW LONG HAUL 36E ET x CHURCHILL LADY 602D

BW 82  
WW 749

CED	4.2	
BW	3.8	
WW	65	17
YW	111	9
SC	2.1	1
MM	35	9
UDR	1.3	
TEAT	1.4	13
CW	84	18
REA	.46	
MRB	.04	
\$BMI	417	25
SCHB	128	

# CHURCHILL OSHOTO 527N 21

REG # 44667011 | POLLED | 01/03/25

**SIRE** CSC 701 OSHOTO 316 (P44467816)  
CSC 508 50B BRAUN 704 x CSC 502 LADY DEW 701

**DAM** CHURCHILL LADY 0192H (44149792)  
NJW LONG HAUL 36E ET x CHURCHILL LADY 7273E

BW 85  
WW 645

CED	-0.9	
BW	3.8	
WW	62	
YW	107	13
SC	1.4	15
MM	40	2
UDR	1.3	
TEAT	1.4	13
CW	72	
REA	.49	
MRB	-.09	
\$BMI	460	11
SCHB	106	





## 22 CHURCHILL OSHOTO 5108N ET

REG # 44666895 | HOMO POLL | 01/15/25

**SIRE** CSC 701 OSHOTO 316 (P44467816)  
CSC 508 50B BRAUN 704 x CSC 502 LADY DEW 701

**DAM** CHURCHILL LADY 0403H ET (P44245920)  
EFBEEF BR VALIDATED B413 x SR CCC LADYSPORT 2205 Z ET

CED	-1.5	
BW	4.5	
WW	68	11
YW	115	5
SC	1.0	
MM	32	19
UDR	1.2	
TEAT	1.0	
CW	74	
REA	.57	
MRB	.18	
SBMI	362	
SCHB	132	

BW 78  
WW 647



CHURCHILL LADY 0403H - \$67,500 Dam of Lot 22

### ONE OF OSHOTO'S BEST! OUT OF THE POPULAR 0403 COW!

This Oshoto son is out of the popular 0403 cow! She produced many great calves for top end herds and then sold to Bowling Herefords. This bull is super strong and deep and is full of muscle! He also has wonderful pigment. One of Oshoto's best!



CHURCHILL LADY 1303J - \$18,500 Dam of Lot 23

## 23 CHURCHILL OSHOTO 5116N

REG # 44666902 | HOMO POLL | 01/18/25

**SIRE** CSC 701 OSHOTO 316 (P44467816)  
CSC 508 50B BRAUN 704 x CSC 502 LADY DEW 701

**DAM** CHURCHILL LADY 1303J ET (P44306008)  
BIRDWELL VANGUARD 5022 9337 x H FHF ZOEY 8418 ET

CED	3.3	
BW	2.3	
WW	50	
YW	82	
SC	1.2	
MM	28	
UDR	1.4	9
TEAT	1.4	13
CW	55	
REA	.60	
MRB	.07	
SBMI	414	
SCHB	99	

BW 83  
WW 645

A good looking Oshoto bull with loads of quality! His dam is an excellent young cow who produced a terrific herd sire for Bar Z in Idaho.



CHURCHILL LADY 2131K - \$13,000 Dam of Lot 24 - Maternal Sister to Desperado

## 24 CHURCHILL OSHOTO 514N

REG # 44666930 | HOMO POLL | 01/02/25

**SIRE** CSC 701 OSHOTO 316 (P44467816)  
CSC 508 50B BRAUN 704 x CSC 502 LADY DEW 701

**DAM** CHURCHILL LADY 2131K (P44378011)  
TH MASTERPLAN 183F x CHURCHILL LADY 8251F ET

CED	0.3	
BW	3.0	
WW	62	
YW	110	10
SC	1.2	
MM	36	7
UDR	1.4	9
TEAT	1.4	13
CW	71	
REA	.35	
MRB	-.01	
SBMI	402	
SCHB	111	

BW 88  
WW 606

### HE WILL REALLY ADD SOME POUNDS!

This Oshoto son is as deep as can be with color and pigment! His dam has an ideal udder and is a sister to Desperado. He will really add some pounds to a calf crop!





## CHURCHILL OSHOTO 508N 25

REG # 44666888 | POLLED | 01/01/25

**SIRE** CSC 701 OSHOTO 316 (P44467816)  
CSC 508 50B BRAWN 704 x CSC 502 LADY DEW 701

**DAM** CHURCHILL LADY 9178G (P44044201)  
NJW LONG HAUL 36E ET x MC 1271 465A ROBERTA 1512

CED	1.1	
BW	4.2	
WW	65	19
YW	110	9
SC	1.9	2
MM	32	23
UDR	1.3	
TEAT	1.3	
CW	75	
REA	.50	
MRB	.04	
\$BMI	370	
SCHB	120	

BW 87  
WW 783

*A COWMAN'S BULL -  
POWER, COLOR & A BEAUTIFUL DAM!*

Look at his length of body — and then get behind him! Oshoto just swept the Canadian shows, and this guy looks a whole lot like him. His dam is as ideal as they come, with a beautiful udder. There won't be many Oshoto sons offered this year, but you can get in on a great one right here!



CHURCHILL LADY 9178G - \$20,000 Dam of Lot 25







# LOTS 26-31

## SONS OF

# Smokey



CHURCHILL LADY 3310L ET - GKB & Colyer's \$160,000 Dam of Lot 26

## 26 CHURCHILL SMOKEY 5122N

REG # 44666906 | HOMO POLL | 01/18/25

**SIRE** CHURCHILL SMOKEY 3128L ET (P44462190)  
RST FINAL PRINT 0016 *CH* BR VALIDATED B413 6035 7098

**DAM** CHURCHILL LADY 3310L ET (P44504275)  
CHURCHILL RED THUNDER 133J ET *CH* CHURCHILL LADY 023H ET

*A 3310 SON WITH 11 TRAITS IN THE TOP 10%!*

This Smokey son out of the eye popping 3310 cow is thick, and deep! He is moderate with fast growth and big-time numbers: 11 traits in the top 10 percent including WW, YW, Fert, Milk, Udder, RE, BMI & CHB. His beautiful, popular dam sold in our dispersal for 160K to GKB & Colyer.

CED	-2.2	
BW	1.6	
WW	73	4
YW	110	10
SC	1.5	10
MM	38	4
UDR	1.4	9
TEAT	1.4	13
CW	86	14
REA	1.22	1
MRB	.25	21
SBMI	520	3
SCHB	158	9

BW 81  
WW 709



CHURCHILL LADY 3219L - \$20,000 Dam of Lot 27 (she sold to the Hordos family in SK)

## 27 CHURCHILL SMOKEY 5128N

REG # 44666912 | HOMO POLL | 01/21/25

**SIRE** CHURCHILL SMOKEY 3128L ET (P44462190)  
RST FINAL PRINT 0016 *CH* BR VALIDATED B413 6035 7098

**DAM** CHURCHILL LADY 3219L (P44462273)  
CSC 76V HENRY 014 *CH* BAR S LHF 0104 MISS 49C 750 ET

A terrific Smokey son out of favorite two-year-old heifer! He is homozygous, good looking, and has pretty ideal numbers. His dam is a thing of beauty with lots of shape and an ideal udder!

CED	3.5	
BW	2.8	
WW	66	14
YW	99	
SC	1.7	4
MM	40	2
UDR	1.4	9
TEAT	1.4	13
CW	78	
REA	.89	4
MRB	.16	
SBMI	519	3
SCHB	121	

BW 73  
WW 740



CHURCHILL LADY 345L - Dam of Lot 28

## 28 CHURCHILL SMOKEY 5125N

REG # 44666909 | SCURS | 01/20/25

**SIRE** CHURCHILL SMOKEY 3128L ET (P44462190)  
RST FINAL PRINT 0016 *CH* BR VALIDATED B413 6035 7098

**DAM** CHURCHILL LADY 345L (P44462324)  
CHURCHILL RED THUNDER 133J ET *CH* CHURCHILL LADY 1223Y

*Calving Ease with Fast Growth & a Whole Lot More!*

You will really like the muscle shape and length of body and overall completeness here. His numbers are very strong in all areas with top 7 percent both BMI and CHB! His excellent dam sold to Garmin Cattle.

CED	7.1	21
BW	1.7	
WW	73	4
YW	108	12
SC	1.0	
MM	33	16
UDR	1.4	9
TEAT	1.4	13
CW	91	8
REA	1.30	1
MRB	.29	16
SBMI	480	7
SCHB	163	7

**CE** BW 75  
WW 784





## CHURCHILL BEAR 5113N 29

REG # 44666900 | POLLED | 01/16/25

**SIRE** CHURCHILL SMOKEY 3128L ET (P44462190)  
RST FINAL PRINT 0016 x BR VALIDATED B413 6035 7098

**DAM** CHURCHILL LADY 2304K ET (P44474290)  
NJW LONG HAUL 36E ET x CHURCHILL LADY 0400H ET

CED	0.7	
BW	1.2	20
WW	79	1
YW	134	1
SC	1.2	
MM	46	1
UDR	1.4	9
TEAT	1.4	13
CW	103	2
REA	1.17	1
MRB	.28	17
\$BMI	561	1
SCHB	177	3

BW 79  
WW 918

*Bear* IS ONE MASSIVE BEAST! #1 FOR WW!

Churchill Bear is as massive a beast as you can imagine—just look at his total dimension! Huge hindquarter, tremendous length, and big rib. He is the No. 1 bull for weaning weight and ranks in the top 1% for eight traits, including WW, YW, Milk, CW, REA, and BMI. His ideal two-year-old dam sold to Ground Zero Farms. If you want to make easy-fleshing, efficient cows with great udders and carcass merit, here he is.



CHURCHILL LADY 9178G - \$20,000 Dam of Lot 25







## 30 CHURCHILL SMOKEY 567N

REG # 44667051 | POLLED | 01/09/25

**SIRE** CHURCHILL SMOKEY 3128L ET (P44462190)  
RST FINAL PRINT 0016 *CE* BR VALIDATED B413 6035 7098

**DAM** CHURCHILL LADY 304L (P44462162)  
CHURCHILL BROADWAY 104L *CE* CHURCHILL LADY 175J

*HE IS THE TOTAL PACKAGE!*

A powerful Smokey son out of a great two-year-old heifer! Look at the shape, rib & overall dimension of this guy! Low birth and near 800 lbs on weaning! He can be used on heifers + his dam has an elite udder. He ranks in the top 5% for growth and the top 1% for Milk, Udder, Teat, RE & BMI!

CED	7.6	18
BW	1.9	
WW	73	4
YW	114	6
SC	1.2	
MM	42	1
UDR	1.5	2
TEAT	1.7	1
CW	86	14
REA	1.15	1
MRB	25	21
SBMI	555	1
SCHB	148	15

**CE** BW 78  
WW 799

## 31 CHURCHILL SMOKEY 590N

REG # UNREGISTERED | POLLED | 01/01/25

**SIRE** CHURCHILL SMOKEY 3128L ET (P44462190)  
RST FINAL PRINT 0016 *CE* BR VALIDATED B413 6035 7098

**DAM** THOMAS COUNTY *CE* SENSATION


## 32 CHURCHILL SHERMAN 516N

REG # 44666948 | POLLED | 01/02/25

**SIRE** CHURCHILL W4 SHERMAN 2157K ET (P44378036)  
KCF BENNETT RESOLVE G595 *CE* CHURCHILL LADY 079H ET

**DAM** CHURCHILL LADY 6243D (P43702979)  
H H PERFECT TIMING 0150 ET *CE* CHURCHILL LADY 339A

CED	9.5	9
BW	0.5	12
WW	57	
YW	89	
SC	1.0	
MM	23	
UDR	1.3	
TEAT	1.4	13
CW	75	
REA	.56	
MRB	.31	14
SBMI	454	12
SCHB	148	16

BW 75  
WW 643

## 33 CHURCHILL SHERMAN 4516M ET

REG # 44700854 | POLLED | 12/28/24

**SIRE** CHURCHILL W4 SHERMAN 2157K ET (P44378036)  
KCF BENNETT RESOLVE G595 *CE* CHURCHILL LADY 079H ET

**DAM** RMB 4013 SOUTHERN BELL 319F ET (P43873759)  
INNISFAIL WHR XG651/723 4013 *CE* WHITEHAWK 2328 BEEFMAID 145X

CED	6.7	23
BW	0.4	11
WW	63	24
YW	98	
SC	1.3	21
MM	34	14
UDR	1.3	
TEAT	1.3	
CW	67	
REA	.38	
MRB	.52	3
SBMI	490	6
SCHB	134	

BW 80  
WW 672



# LOT 34



## CHURCHILL SHERMAN 522N 34

REG # 44667001 | POLLED | 01/02/25

**SIRE** CHURCHILL W4 SHERMAN 2157K ET (P44378036)  
KCF BENNETT RESOLVE G595  $\times$  CHURCHILL LADY 079H ET

**DAM** CHURCHILL LADY 8206F (P43919867)  
CHURCHILL KICKSTART 501C ET  $\times$  CHURCHILL LADY 6186D ET

*AN IDEAL RANCHER BULL FOR BLACK COWS!*

This is a great looking Sherman bull with dark color and lots of pigment! He is a pretty ideal rancher bull to breed to black cows! Look at the muscle shape, bone and structure he has! Excellent proven dam and excellent numbers too!

CED	4.7	
BW	1.1	19
WW	58	
YW	93	
SC	1.1	
MM	26	
UDR	1.3	
TEAT	1.4	13
CW	84	17
REA	.88	5
MRB	.14	
SBMI	438	17
SCHB	142	21

BW 77  
WW 658

## HICKEY BIG JAKE 502N 35

REG # 44712804 | POLLED | 01/02/25

**SIRE** CHURCHILL BIG JAKE 0265H ET (P44198619)  
CHURCHILL RED BARON 8300F  $\times$  SR CCC LADYSPORT 2205 Z

**DAM** CHURCHILL LADY 8232F (43919884)  
BR BELLE AIR 6011  $\times$  CHURCHILL LADY 3196A ET

CED	0.8	
BW	3.0	20
WW	65	15
YW	107	11
SC	1.5	
MM	24	
UDR	1.4	10
TEAT	1.4	15
CW	78	
REA	.39	
MRB	.04	
SBMI	429	23
SCHB	120	

**CE** BW 88  
WW 746

## HICKEY RED CLOUD 505N 36

REG # 44714842 | POLLED | 01/05/25

**SIRE** CHURCHILL RED CLOUD 0376H ET (P44273826)  
CHURCHILL RED BARON 8300F ET  $\times$  BR VALIDATED B413 6035 7098

**DAM** CHURCHILL LADY 8157F ET (43919839)  
CHURCHILL GALLATIN 5211C ET  $\times$  CHURCHILL LADY 220Z ET

*A FANTASTIC RED CLOUD SON!*

A fantastic Red Cloud son with power, structure, and numbers! His dam has been a super producer for Jack Hickey every year. Look at the length, shape and color of this guy! His udder quality is top 1 percent and his BMI is top 4 percent and CHB top 10 percent.

CED	5.7	
BW	1.9	
WW	65	20
YW	102	25
SC	1.5	11
MM	34	13
UDR	1.6	1
TEAT	1.6	1
CW	76	
REA	.77	12
MRB	.40	8
SBMI	510	4
SCHB	157	11

BW 80  
WW 703







# LOTS 37-42 SONS OF

## New Standard



### 37 CHURCHILL NEW STANDARD 593N

REG # 44667248 | HOMO POLL | 01/13/25

**SIRE** BIRDWELL NEW STANDARD 2912 ET (P44358760)  
KCF BENNETT RESOLVE G595 *BR* VALIDATED B413 6035 7098

**DAM** CHURCHILL LADY 372L (P44462347)  
CHURCHILL BROADWAY 104J *BR* CHURCHILL LADY 1113J

*HIS NUMBERS ARE AS GOOD AS YOU CAN FIND!*

A homozygous New Standard son out of one of the best two-year-olds around! This cow has a perfect udder & did a great job raising him. Top 1% in eight traits, including Fert, Udder, Teat, RE, Marb, BMI & CHB. With his look, dam & data, the new owner is getting the right Hereford bull for tomorrow!

CED	7.4	19
BW	1.7	
WW	70	7
YW	101	24
SC	1.2	
MM	41	2
UDR	1.5	2
TEAT	1.6	1
CW	93	6
REA	1.26	1
MRB	.60	2
SBMI	652	1
SCHB	202	1

BW 81  
WW 708



CHURCHILL LADY 231K - Dam of Lot 38

### 38 CHURCHILL NEW STANDARD 5218N

REG # 44666992 | POLLED | 03/08/25

**SIRE** BIRDWELL NEW STANDARD 2912 ET (P44358760)  
KCF BENNETT RESOLVE G595 *BR* VALIDATED B413 6035 7098

**DAM** CHURCHILL JR LADY 231K (P44378129)  
BIRDWELL VANGUARD 5022 9337 *BR* CHURCHILL LADY 645D ET

*SOME OF THE BEST CARCASS EVER!*

A moderate framed thick New Standard son out of a great cow! You could use this guy on heifers and get really good daughters. Plus he will have some of the very best carcass ever which will make your calf buyer happy!

CED	4.7	
BW	1.3	22
WW	60	
YW	85	
SC	1.1	
MM	41	2
UDR	1.4	9
TEAT	1.5	4
CW	65	
REA	1.31	1
MRB	.48	4
SBMI	562	1
SCHB	145	18

BW 80  
WW 735



SRR MISS VALOR 2051 ET - \$60,000 Dam of Lots 39 & 43

### 39 CHURCHILL NEW STANDARD 5188N

REG # 44667614 | HOMO POLL | 02/14/25

**SIRE** BIRDWELL NEW STANDARD 2912 ET (P44358760)  
KCF BENNETT RESOLVE G595 *BR* VALIDATED B413 6035 7098

**DAM** SRR MISS VALOR 2051ET (P44430742)  
RV VALOR 9444G ET *BR* GENOA MISS HOMETOWN 10Y 15047

*BIG TIME MATERNAL WITH GREAT CARCASS!*

A powerful combination! A homozygous polled calving ease New Standard son out of a great cow that sold to Barnes Herefords! He is ideal to breed your heifers to and then keep the replacements!

CED	10.7	6
BW	-0.5	6
WW	57	
YW	85	
SC	1.1	
MM	35	10
UDR	1.5	2
TEAT	1.5	4
CW	71	
REA	.81	8
MRB	.60	2
SBMI	562	1
SCHB	166	6

**CE** BW 72  
WW 634



## CHURCHILL NEW STANDARD 556N 40

REG # 44667244 | SCURS | 01/07/25

**SIRE** BIRDWELL NEW STANDARD 2912 ET (P44358760)  
KCF BENNETT RESOLVE G595  $\times$  BR VALIDATED B413 6035 7098

**DAM** CHURCHILL LADY 374L (44462349)  
CHURCHILL DESPERADO 029H  $\times$  CHURCHILL LADY 7486E

CED	-2.4	
BW	5.0	
WW	70	7
YW	101	24
SC	1.5	10
MM	43	1
UDR	1.5	2
TEAT	1.6	1
CW	88	11
REA	.94	3
MRB	.57	2
SBMI	519	3
SCHB	173	4

BW 94  
WW 779

## CHURCHILL NEW STANDARD 598N 41

REG # 44667249 | POLLED | 01/14/25

**SIRE** BIRDWELL NEW STANDARD 2912 ET (P44358760)  
KCF BENNETT RESOLVE G595  $\times$  BR VALIDATED B413 6035 7098

**DAM** CHURCHILL LADY 3207L (44462261)  
CHURCHILL DESPERADO 029H  $\times$  CHURCHILL LADY 940G

CED	2.9	
BW	2.2	
WW	73	4
YW	110	9
SC	1.7	4
MM	37	5
UDR	1.5	2
TEAT	1.5	4
CW	93	6
REA	1.09	1
MRB	.35	10
SBMI	505	4
SCHB	165	6

BW 82  
WW 776

## CHURCHILL NEW STANDARD 5115N 42

REG # 44667250 | SCURS | 01/17/25

**SIRE** BIRDWELL NEW STANDARD 2912 ET (P44358760)  
KCF BENNETT RESOLVE G595  $\times$  BR VALIDATED B413 6035 7098

**DAM** CHURCHILL LADY 3206L (P44462260)  
CHURCHILL DESPERADO 029H  $\times$  CHURCHILL LADY 6205D

CED	4.8	
BW	2.3	
WW	70	7
YW	104	18
SC	1.7	4
MM	33	17
UDR	1.4	9
TEAT	1.5	4
CW	83	19
REA	1.01	2
MRB	.59	2
SBMI	535	2
SCHB	180	3

BW 81  
WW 742

## CHURCHILL GUNSMOKE 5191N ET 43

REG # 44666967 | POLLED | 02/16/25

**SIRE** STELLPFLUG GUNSMOKE 222 ET (P44400396)  
JDH AH BENTON 8G ET  $\times$  NJW 202C 4013 HOMEMAKER 90H ET

**DAM** SRR MISS VALOR 2051ET (P44430742)  
RV VALOR 9444G ET  $\times$  GENOA MISS HOMETOWN 10Y 15047

CED	4.0	
BW	1.2	20
WW	63	23
YW	108	12
SC	1.3	21
MM	28	
UDR	1.5	2
TEAT	1.5	4
CW	99	3
REA	.79	9
MRB	.45	5
SBMI	475	8
SCHB	188	2

BW 77  
WW 652

### HE WILL LIFT YOUR PROFITABILITY!

A good looking Gunsmoke bull out of the donor who sold to Barnes Herefords! This bull has really good numbers with top 7% BMI and top 2% CHB. His dam is a power cow with lots of substance, volume & a really nice udder.

## CHURCHILL LAREDO 5199N ET 44

REG # 44666975 | HOMO POLL | 02/21/25

**SIRE** CHURCHILL LAREDO 3146L ET (P44462205)  
RST FINAL PRINT 0016  $\times$  CHURCHILL LADY 1221J ET

**DAM** CHURCHILL LADY 307L (P44486416)  
JW 1857 MERIT 21134  $\times$  CHURCHILL LADY 0368H ET

### A REALLY GOOD LAREDO $\times$ 307L!

307L is one of the best cows we know of! She is powerful & strong with an ideal udder! She's a feature donor for Four Diamond Livestock and Jennings Land & Cattle. This guy has strong numbers for growth, maternal and udder quality.

CED	6.3	
BW	0.3	10
WW	73	4
YW	118	4
SC	1.5	10
MM	40	2
UDR	1.5	2
TEAT	1.5	4
CW	84	18
REA	.75	11
MRB	.33	12
SBMI	467	9
SCHB	157	10



BW 77  
WW 726



## CHURCHILL LAREDO 5171N 45

REG # 44666949 | POLLED | 02/07/25

**SIRE** CHURCHILL LAREDO 3146L ET (P44462205)  
RST FINAL PRINT 0016  $\times$  CHURCHILL LADY 1221J ET

**DAM** G4G 405B 8300 ADIRA 8305 (P44362357)  
CHURCHILL RED BARON 8300F ET  $\times$  E 243R EVA 405B ET

CED	8.0	16
BW	1.9	
WW	67	12
YW	105	16
SC	1.3	21
MM	26	
UDR	1.6	1
TEAT	1.6	1
CW	75	
REA	.66	20
MRB	-.02	
SBMI	369	
SCHB	115	



BW 80  
WW 616



CHURCHILL LAREDO 3146L ET - Sire of Lots 44 & 45



# LOTS 46-47 SONS OF

## Doc Holiday



CHURCHILL DOC HOLIDAY 2323K - Sire of Lots 46 & 47

### 46 CHURCHILL DOC HOLIDAY 520N

REG # 44666984 | HOMO POLL | 01/02/25

**SIRE** CHURCHILL DOC HOLIDAY ET (P44484862)  
KJ TWJ 907E LIBERTY 159H ET  $\times$  BR VALIDATED B413 6035 7098

**DAM** CHURCHILL LADY 1113J (P44267822)  
DM ALL AROUND 904G ET  $\times$  CHURCHILL LADY 7310E ET

CED	8.7	13
BW	1.4	23
WW	65	17
YW	96	
SC	1.2	
MM	30	
UDR	1.4	9
TEAT	1.4	13
CW	74	
REA	.83	7
MRB	.45	5
SBMI	461	11
SCHB	157	10

**CE**

BW 71  
WW 738



CHURCHILL LADY 1113J - \$17K Dam of Lot 46

### 47 CHURCHILL DOC HOLIDAY 535N

REG # 44667023 | HOMO POLL | 01/04/25

**SIRE** CHURCHILL DOC HOLIDAY ET (P44484862)  
KJ TWJ 907E LIBERTY 159H ET  $\times$  BR VALIDATED B413 6035 7098

**DAM** CHURCHILL LADY 2238K (P44378108)  
CHURCHILL JR IMPACT 823F ET  $\times$  CHURCHILL LADY 6145D

CED	3.9	
BW	1.9	
WW	65	17
YW	106	15
SC	2.0	1
MM	27	
UDR	1.4	9
TEAT	1.3	
CW	68	
REA	.80	8
MRB	.39	8
SBMI	419	24
SCHB	139	24

BW 78  
WW 762



CHURCHILL LADY 466M - \$60K 3/4 Sister to Lot 47

**A GREAT BULL FROM EVERY ANGLE! BLACK NOSE & PIGMENT!**

A very unique and very good Doc Holiday son! His EPDs are very good and very balanced with calving ease, udder quality, and carcass. MDC.

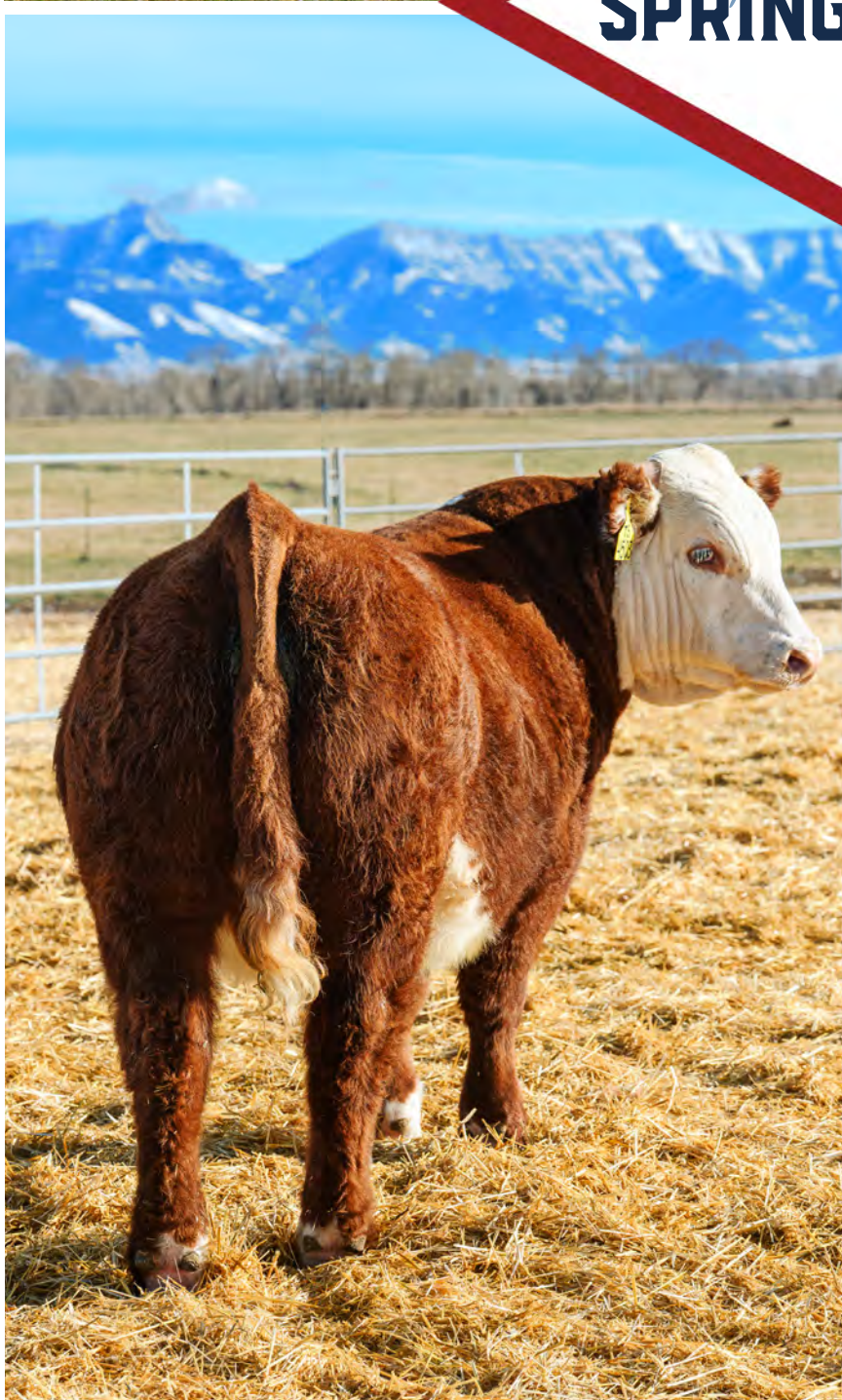
**A SUPER BULL OUT OF A GREAT COW WITH EXCELLENT DATA!**

His 3/4 sister sold for \$60,000 to Lindskov's LT Ranch and was a highlight in September. He has excellent pigment, lots of shape, and a strong back and rib!





## *Horned* **SPRING BULLS**



## **WE ARE PROUD OF THESE HORNED BULLS**

*We are very proud to have been breeders of high-quality Horned Herefords for 45 years! I know my Dad would be proud of this set of bulls! This is the first sire group out of Stanfield, and they are incredibly powerful bulls. He's the #1 sire in the breed for WW & YW, so you can bank on these bulls adding weight and muscle to your calf crop! If you have black cows, his sons will make the best baldies you can imagine!*

Once again, there is a super sire group out of the Cooper bulls 267K and 0186H! There are a few bulls out of the Holden sires 3107L and 2116K, and they are terrific! **Turn them out & watch them make money!**





# LOTS 48-49 STANFIELD X 3121 Sons

*Magnum*

A totally complete Hereford bull who could lead any progressive ranching operation to new levels! Our goal for 45 years was to make the next generation better and this bull does just that. He is massive in his makeup with a huge middle third, big rear quarter, plenty of bone, and a big broad back. His pigment and hair type will be ideal for warmer and more humid climates which is fairly hard to find. He is top 1 % WW and YW with moderate BW and very high Marb and high Udder and Teat!

His dam has produced the best group of calves out of one cow that we have had and his sire is in high demand with very little semen available.

*He could sell a boatload of straws, as he does so many things at a very high level!*

## 48 CHURCHILL JLC MAGNUM 545N ET

REG # 44665846 | HORNED | 01/06/25

**SIRE** CHURCHILL STANFIELD 3122L (44462187)  
CHURCHILL ROUGHNECK 0280H ET x CHURCHILL LADY 890F  
**DAM** CHURCHILL LADY 3121L ET (P44462186)  
RST FINAL PRINT 0016 x BR VALIDATED B413 6035 7098

CED	-0.9	
BW	3.1	
WW	83	1
YW	132	1
SC	1.8	3
MM	39	3
UDR	1.4	10
TEAT	1.5	5
CW	85	19
REA	.78	11
MRB	.46	5
SBMI	427	24
SCHB	154	13

BW 85  
WW 873



CHURCHILL STANFIELD 3122L - Sire of Lots 48-61



CHURCHILL LADY 3121L ET - GKB & Colyer's \$220,000 Dam of Lots 48 & 49





## CHURCHILL ARIZONA 589N ET **49**

REG # 44667066 | HORNED | 01/12/25

**SIRE** CHURCHILL STANFIELD 3122L (44462187)  
CHURCHILL ROUGHNECK 0280H ET x CHURCHILL LADY 890F

**DAM** CHURCHILL LADY 3121L ET (P44462186)  
RST FINAL PRINT 0016 x BR VALIDATED B413 6035 7098

CED	-5.3	
BW	6.8	
WW	87	1
YW	143	1
SC	1.8	3
MM	47	1
UDR	1.3	
TEAT	1.5	4
CW	92	7
REA	.92	4
MRB	.37	9
\$BMI	485	6
SCHB	162	7

BW 90  
WW 921

*Arizona*  
**A ONCE IN A LONG TIME KIND OF BULL!**

The thickest bull we have ever had here! Arizona has been admired by some of the breed's best minds. He is just so deep and powerful and wide based with ease of fleshing to go with it. He is clean fronted, square hiped, and really good on his feet and legs. Arizona has the right color and markings and pigment. He could have a record yearling weight for our program!

The dam of this bull was our high selling female of all time! His EPDs are exceptional in so many areas. Sure, we would like his BW EPD to be a little lower but he was not an exceptionally big calf at birth and his cow family almost always holds BW down. This bull is a once in a long time kind of bull! Use him correctly and to your advantage.

— Terms Announced Sale Day —





# LOTS 48-61

## SONS OF

# Stanfield



CHURCHILL LADY 079H ET - \$65,000 Dam of Sherman & Lot 50



CHURCHILL W4 LADY 2152K - Dam of Lot 51 & Maternal Sib to Lot 50



CHURCHILL LADY 850F - Dam of 504N



## 50 CHURCHILL STANFIELD 5204N ET

REG # 44666980 | HORNED | 02/23/25

**SIRE** CHURCHILL STANFIELD 3122L (44462187)  
CHURCHILL ROUGHNECK 0280H ET x CHURCHILL LADY 890F

**DAM** CHURCHILL LADY 079H ET (P44149885)  
EXR BANKROLL 8130 ET x CHURCHILL LADY 7189E ET

STANFIELD x SHERMAN'S DAM!

What a combination for performance, muscle, and volume!

CED	1.1	
BW	4.8	
WW	71	6
YW	119	3
SC	1.9	2
MM	30	
UDR	1.1	
TEAT	1.1	
CW	87	13
REA	.70	16
MRB	.22	
SBMI	430	20
SCHB	136	

BW 75  
WW 615

## 51 CHURCHILL STANFIELD 4518M ET

REG # 44700856 | HORNED | 12/27/24

**SIRE** CHURCHILL STANFIELD 3122L (44462187)  
CHURCHILL ROUGHNECK 0280H ET x CHURCHILL LADY 890F

**DAM** CHURCHILL W4 LADY 2152K (P44378031)  
CL 1 DOMINO 0186H x CHURCHILL LADY 079H ET

TOP 1% PERFORMANCE + TOP 2% BMI!

A thick made, stout Stanfield son out of a great young cow! This 0186 two-year-old out of Sherman's dam has the most beautiful udder! This powerhouse bull ranks in the top 1% for performance with top 2% BMI.

CED	1.6	
BW	4.9	
WW	78	2
YW	129	1
SC	1.9	2
MM	38	4
UDR	1.3	
TEAT	1.4	13
CW	88	12
REA	.67	19
MRB	.37	9
SBMI	554	1
SCHB	151	13

BW 80  
WW 685

## 52 CHURCHILL STANFIELD 504N ET

REG # 44667240 | HORNED | 01/01/25

**SIRE** CHURCHILL STANFIELD 3122L (44462187)  
CHURCHILL ROUGHNECK 0280H ET x CHURCHILL LADY 890F

**DAM** CL 1 DOMINETTE 850F (43903431)  
CL 1 DOMINO 215Z x CL 1 DOMINETTE 5123C 1ET

HE COMBINES TWO HEREFORD GREATS!

A combination of two great Herefords: Stanfield and the 850 Cooper cow! This bull is a touch bigger with lots of length and extension. He has great structure and soundness. He ranks in the top 10 % for both BMI and CHB!

CED	-0.9	
BW	4.7	
WW	77	2
YW	126	1
SC	1.4	15
MM	37	5
UDR	1.2	
TEAT	1.3	
CW	94	6
REA	.82	7
MRB	.36	9
SBMI	461	11
SCHB	165	6

BW 84  
WW 685



## CHURCHILL STANFIELD 561N 53

REG # 44667046 | HORNED | 01/08/25

**SIRE** CHURCHILL STANFIELD 3122L (44462187)  
CHURCHILL ROUGHNECK 0280H ET x CHURCHILL LADY 890F

**DAM** CHURCHILL LADY 141J (P44267947)  
CHURCHILL RED BARON 8300F ET x CHURCHILL LADY 8400F

*ONE OF OUR CREW'S FAVORITES!*

Big middle, extra thick, moderate framed, and stout is how you would describe him. The Stanfield bulls are very unique with their ability to pack on pounds on a moderate frame and this guy does it extremely well!

CED	2.5	
BW	2.6	
WW	66	16
YW	114	6
SC	1.0	
MM	35	10
UDR	1.4	9
TEAT	1.5	4
CW	81	23
REA	1.00	2
MRB	.08	
SBMI	477	8
SCHB	122	

BW 88  
WW 656



## CHURCHILL STANFIELD 540N 54

REG # 44667027 | HORNED | 01/05/25

**SIRE** CHURCHILL STANFIELD 3122L (44462187)  
CHURCHILL ROUGHNECK 0280H ET x CHURCHILL LADY 890F

**DAM** CHURCHILL LADY 5272C ET (43635541)  
CL 1 DOMINO 0130X 1ET x CHURCHILL LADY 002X ET

A Stanfield son that is stout, thick, deep, and massive bodied! When you look at this bull you can easily see why Stanfield is the top performance bull in the Hereford breed!

CED	0.7	
BW	4.0	
WW	77	2
YW	120	3
SC	1.6	6
MM	37	6
UDR	1.2	
TEAT	1.2	
CW	94	6
REA	.92	4
MRB	.23	24
SBMI	427	21
SCHB	152	13

BW 90  
WW 712



## CHURCHILL STANFIELD 5165N 55

REG # 44666943 | HORNED | 02/04/25

**SIRE** CHURCHILL STANFIELD 3122L (44462187)  
CHURCHILL ROUGHNECK 0280H ET x CHURCHILL LADY 890F

**DAM** CHURCHILL LADY 538C (43586907)  
HH ADVANCE 3022A ET x CHURCHILL LADY 188V

*A LOWER BW STANFIELD!*

A lower birth weight Stanfield son out of an older proven cow! He has a massive rear quarter and rib shape!

CED	4.7	
BW	2.9	
WW	65	17
YW	110	9
SC	1.4	15
MM	40	2
UDR	1.0	
TEAT	1.0	
CW	92	7
REA	.80	8
MRB	.16	
SBMI	392	
SCHB	143	20

BW 78  
WW 734



## HICKEY FINAL RUN 501N 56

REG # 44712217 | HORNED | 01/02/25

**SIRE** CHURCHILL STANFIELD 3122L (44462187)  
CHURCHILL ROUGHNECK 0280H ET x CHURCHILL LADY 890F

**DAM** CHURCHILL LADY 963G (44044254)  
CHURCHILL NIGHTCAP 7256E x CHURCHILL LADY 701E

*HE IS A POWERHOUSE!*

This Stanfield bull is a powerhouse with huge performance! He is long bodied, really thick made, and is pleasing to the eye. What a combination!

CED	-3.1	
BW	6.4	
WW	80	1
YW	136	1
SC	1.8	3
MM	40	2
UDR	1.2	
TEAT	1.3	
CW	91	9
REA	.72	16
MRB	.18	
SBMI	425	25
SCHB	143	23

BW 103  
WW 812





## 57 CHURCHILL STANFIELD 529N

REG # 44667013 | HORNED | 01/03/25

**SIRE** CHURCHILL STANFIELD 3122L (44462187)  
CHURCHILL ROUGHNECK 0280H ET x CHURCHILL LADY 890F

**DAM** CHURCHILL LADY 9212G (44053248)  
HH ADVANCE 5044C ET x CHURCHILL LADY 4123B

BW 82  
WW 664

CED	4.7	
BW	1.8	
WW	64	19
YW	105	17
SC	1.8	3
MM	36	6
UDR	1.2	
TEAT	1.3	
CW	70	
REA	.49	
MRB	-.08	
SBMI	333	
SCHB	81	

## 58 CHURCHILL STANFIELD 5135N

REG # 44666918 | HORNED | 01/24/25

**SIRE** CHURCHILL STANFIELD 3122L (44462187)  
CHURCHILL ROUGHNECK 0280H ET x CHURCHILL LADY 890F

**DAM** CHURCHILL LADY 137J (44268912)  
CL 1 DOMINO 942G x CHURCHILL LADY 8348F ET

BW 78  
WW 628

CED	2.2	
BW	3.8	
WW	67	12
YW	113	7
SC	1.5	10
MM	29	
UDR	1.2	
TEAT	1.3	
CW	80	
REA	.54	
MRB	.25	21
SBMI	409	
SCHB	138	25

## 59 CHURCHILL STANFIELD 5138N

REG # 44666921 | HORNED | 01/27/25

**SIRE** CL 1 DOMINO 267K 1ET (44347274)  
CL 1 DOMINO 0186H x CL 1 DOMINETTE 719E 1ET

**DAM** CHURCHILL LADY 216K (44378047)  
CL 1 DOMINO 0186H x CHURCHILL LADY 538C

BW 82  
WW 751

CED	4.4	
BW	3.0	
WW	72	5
YW	120	3
SC	1.6	7
MM	41	2
UDR	1.2	
TEAT	1.3	
CW	86	17
REA	.50	
MRB	.32	15
SBMI	442	18
SCHB	145	21

## 60 CHURCHILL STANFIELD 5190N

REG # 44666966 | HORNED | 02/15/25

**SIRE** CHURCHILL STANFIELD 3122L (44462187)  
CHURCHILL ROUGHNECK 0280H ET x CHURCHILL LADY 890F

**DAM** CHURCHILL LADY 1145J (44268899)  
CL 1 DOMINO 942G x CHURCHILL LADY 518C

BW 76  
WW 612

CED	6.6	24
BW	1.0	18
WW	65	18
YW	103	20
SC	2.0	1
MM	37	6
UDR	1.2	
TEAT	1.4	13
CW	81	24
REA	.53	
MRB	.30	15
SBMI	445	15
SCHB	136	

## 61 CHURCHILL STANFIELD 5194N

REG # 44666970 | HORNED | 02/19/25

**SIRE** CHURCHILL STANFIELD 3122L (44462187)  
CHURCHILL ROUGHNECK 0280H ET x CHURCHILL LADY 890F

**DAM** CHURCHILL LADY 232K (44378130)  
CL 1 DOMINO 0186H x CHURCHILL LADY 788E

BW 82  
WW 763

CED	4.6	
BW	3.8	
WW	82	1
YW	135	1
SC	2.2	1
MM	30	
UDR	1.4	9
TEAT	1.6	1
CW	93	6
REA	.45	
MRB	.20	
SBMI	405	
SCHB	137	

## 62 CHURCHILL SMOKEY 584N

REG # 44667063 | HORNED | 01/12/25

**SIRE** CHURCHILL SMOKEY 3128L ET (P44462190)  
RST FINAL PRINT 0016 x BR VALIDATED B413 6035 7098

**DAM** LHF MELANIA 305 (P44476543)  
C REAL DEAL 0137 ET x CL 1 DOMINETTE 844F 1ET

BW 81  
WW 728

CED	7.5	19
BW	1.3	23
WW	73	5
YW	111	10
SC	1.3	25
MM	33	17
UDR	1.5	2
TEAT	1.5	5
CW	77	
REA	.67	22
MRB	.48	5
SBMI	565	1
SCHB	157	11



## 63 HICKEY ROCK 504N

REG # 44712805 | HORNED | 01/05/25

**SIRE** CHURCHILL ROCK 646D ET (P43743341)  
NJW 98S R117 RIBEYE 88X ET x SR CCC LADYSPORT 2205 Z ET

**DAM** HICKEY LADY 9100 (44002601)  
CHURCHILL ROUGH RIDER 719E x CHURCHILL LADY 797E ET

*THIS GUY IS SOMETHING ELSE!*

What a great looking bull this is for Jack Hickey! Jack has a small herd of elite cows with Churchill genetics and this guy is something else. Long and super thick and sound and rugged, just an ideal bull!

BW 88  
WW 769

CED	0.5	
BW	3.8	
WW	67	14
YW	104	20
SC	1.0	
MM	30	
UDR	1.3	
TEAT	1.4	15
CW	72	
REA	.42	
MRB	.13	
SBMI	389	
SCHB	117	





## CHURCHILL JR ARLO 5315N ET 64

REG # 44668256 | HORNED | 02/09/25

**SIRE** C ARLO 2135 ET (P44359827)  
LOEWEN GENESIS G16 ET x C 88X NOTICE ME 1311 ET

**DAM** CHURCHILL LADY 978G ET (44053404)  
NJW LONG HAUL 36E ET x DM BR SAVANNA 714 ET

**WANT TO MAKE FEMALES? HERE YA GO!**

This Arlo x "Udder Queen" 978 son has a lot of things going for him! He has a long, thick back with exceptional muscle and extra pigment. His numbers are very good: top 5% Fert, Milk, Udder, Teat, Fat & BMI. If you want to make females, he is a great place to land!

CED	1.2	
BW	3.9	
WW	62	
YW	100	
SC	1.1	
MM	42	6
UDR	1.5	2
TEAT	1.6	1
CW	79	
REA	.63	1
MRB	.22	
SBMI	496	5
SCHB	148	18

BW 78  
WW 692



CHURCHILL LADY 978G "The Udder Queen" - Dam of 5315N







# First Class

AN IDEAL HEREFORD BULL WHO  
COULD HAVE A MAJOR IMPACT ON THE BREED!

## 65 CHURCHILL FIRST CLASS 4503M ET

REG # 44671975 | HORNED | 12/21/24

**SIRE** STELLPFLUG THEN SOME ET (P44493285)  
JDH AH BENTON 8G ET x CHURCHILL LADY 0336H

**DAM** CHURCHILL LADY 3314L ET (P44504281)  
RST FINAL PRINT 0016 x H BL FIRST LADY 1101 ET

CED	1.8	
BW	2.9	
WW	63	25
YW	93	
SC	0.4	
MM	28	
UDR	1.4	9
TEAT	1.5	4
CW	92	7
REA	.87	5
MRB	.30	15
\$BMI	528	2
SCHB	152	13

*First Class* is an ideal Hereford bull! He sets himself apart with exceptional balance, body dimension, build and the way he carries himself. His numbers are really good with top 3% Fertility, high udder scores, and fantastic carcass! He is top 2% BMI and top 12% CHB. His full sister 4500M is one of the most unique females we have had here and looks a lot like *First Class*. This bull could have a major impact on Hereford cattle!

BW 82  
WW 805



CHURCHILL LADY 4500M ET - Full Sister to First Class - She sells as Lot 103





# LOTS 65-68 SONS OF *Then Some*



## CHURCHILL THEN SOME 4502M ET **66**

REG # 44671973 | HORNED | 12/19/24

**SIRE** STELLPFLUG THEN SOME ET (P44493285)

JDH AH BENTON 8G ET x CHURCHILL LADY 0336H

**DAM** CHURCHILL LADY 3314L ET (P44504281)

RST FINAL PRINT 0016 x H BL FIRST LADY 1101 ET

CED	6.7	23
BW	-0.4	6
WW	58	
YW	87	
SC	1.0	
MM	34	13
UDR	1.4	9
TEAT	1.6	1
CW	84	18
REA	.77	10
MRB	.18	
\$BMI	519	3
SCHB	127	



BW 84  
WW 820

### *THIS GUY IS AN ABSOLUTE BEAST!*

A power bull with a huge top & quarter! He combines a lower BW with impressive fertility & excellent udder scores, while being top 3% BMI — the major profit trait. We lost his impressive dam this summer, but she looked a lot like him!

## CHURCHILL THEN SOME 4514M ET **67**

REG # 44700847 | HORNED | 12/16/24

**SIRE** STELLPFLUG THEN SOME ET (P44493285)

JDH AH BENTON 8G ET x CHURCHILL LADY 0336H

**DAM** CHURCHILL LADY 079H ET (P44149885)

EXR BANKROLL 8130 ET x CHURCHILL LADY 7189E ET

CED	1.1	
BW	2.2	
WW	66	16
YW	102	21
SC	1.7	4
MM	30	
UDR	1.3	
TEAT	1.4	13
CW	92	7
REA	1.03	2
MRB	.12	
\$BMI	527	2
SCHB	147	16

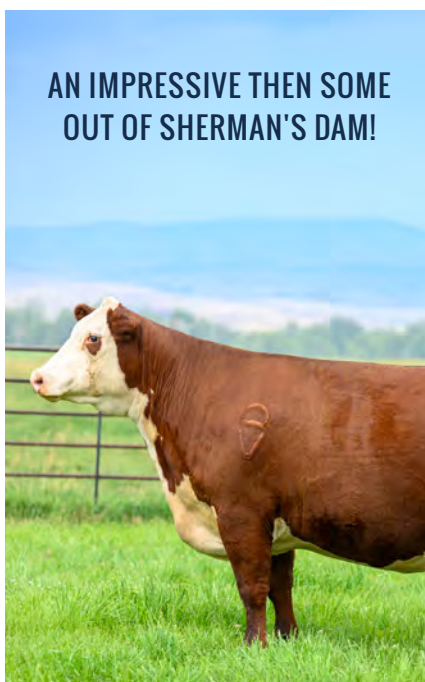


BW 78  
WW 702

### *A SUPER MATERNAL BROTHER TO SHERMAN!*

A super maternal brother to Sherman with an explosive look! He is dark red, pigmented, and shows lots of shape. His dam and sisters are really elite cows with fantastic udders! He has strong EPDs with top 2 % BMI.

## AN IMPRESSIVE THEN SOME OUT OF SHERMAN'S DAM!



CHURCHILL LADY 079H ET - \$65,000 Dam of 4514M







LOT 68



## 68 CHURCHILL ATHLETE 548N

REG # 44667035 | HORNED | 01/06/25

**SIRE** STELLPFLUG THEN SOME ET (P44493285)

JDH AH BENTON 8G ET x CHURCHILL LADY 0336H

**DAM** CHURCHILL LADY 0135H (P44149744)

BR CHARLES HUTTON 6033 x CHURCHILL LADY 4205B

*HE IS BUILT THE RIGHT WAY!*

A strong powerful bull that is built the right way! He is long bodied, showing lots of muscle shape and red meat. His dam is a big bodied power cow.

CED	-3.2	
BW	4.8	
WW	66	16
YW	99	
SC	0.7	
MM	19	
UDR	1.3	
TEAT	1.4	13
CW	96	4
REA	.97	3
MRB	-.10	
\$BMI	357	
\$CHB	130	

BW 82  
WW 659



CHURCHILL LADY 0135H - Dam of 548N

## 69 CHURCHILL ADVANCE 534N

REG # 44667022 | HORNED | 01/03/25

**SIRE** HH ADVANCE 3107L ET (44454247)

CL 1 DOMINO 001H x HH MISS ADVANCE 5139R ET

**DAM** CHURCHILL LADY 7197E ET (43802004)

HH ADVANCE 4075B ET x CHURCHILL LADY 284Z ET

CED	5.9	
BW	0.9	16
WW	58	
YW	92	
SC	1.3	21
MM	23	
UDR	1.2	
TEAT	1.1	
CW	67	
REA	.41	
MRB	.32	13
\$BMI	337	
\$CHB	131	

BW 75  
WW 658



HH ADVANCE 3107L ET - \$50,000 Sire of Lot 69

## 70 CHURCHILL ADVANCE 592N

REG # 44667068 | HORNED | 01/13/25

**SIRE** HH ADVANCE 3004L (44454152)

HH ADVANCE 0159H x HH MISS ADVANCE 0024H ET

**DAM** CHURCHILL LADY 3217L (44462271)

CL 1 DOMINO 0186H x CHURCHILL LADY 7273E

CED	5.4	
BW	0.0	8
WW	49	
YW	81	
SC	0.8	
MM	36	8
UDR	1.3	
TEAT	1.4	13
CW	67	
REA	.41	
MRB	.54	3
\$BMI	361	
\$CHB	146	17

**CE** BW 72  
WW 651

*WANT TO MAKE GREAT COWS? BUY THIS BULL!*

The dam of this bull is as good as it gets! If you want to make some awesome Hereford cows, buy this bull! Plus you can breed him to your heifers the first year. And he is very high Marb, which we love!



CHURCHILL LADY 3217L - Copeland's \$30,000 Dam of 592N





# LOTS 71-74 *Sons of* ADVANCE 2116K



## CHURCHILL ADVANCE 597N 71

REG # 44667071 | HORNED | 01/14/25

**SIRE** HH ADVANCE 2116K (44346768)  
HH ADVANCE 0022H ET x HH MISS ADVANCE 0001H

**DAM** CHURCHILL LADY 2306K (44474294)  
HH ADVANCE 0159H x CHURCHILL LADY 4111B



BW 80  
WW 747

CED	5.1	
BW	1.1	19
WW	63	23
YW	92	
SC	1.0	
MM	35	9
UDR	1.2	
TEAT	1.2	
CW	83	19
REA	.47	
MRB	.29	16
SBMI	424	22
SCHB	144	19

## CHURCHILL ADVANCE 573N 72

REG # 44667055 | HORNED | 01/10/25

**SIRE** HH ADVANCE 2116K (44346768)  
HH ADVANCE 0022H ET x HH MISS ADVANCE 0001H

**DAM** CHURCHILL LADY 3237L ET (44476292)  
BR ER BIG COUNTRY 007 ET x CHURCHILL LADY 978G ET

*THIS BULL IS AWESOME!*

The dam of this bull is a very ideal two-year-old! The bull is awesome with a high weaning weight and a really good look to him! The 2116 sire is as good a curve bender as you will find with added Marb.

CED	8.6	13
BW	1.1	19
WW	68	10
YW	106	15
SC	1.2	
MM	35	9
UDR	1.3	
TEAT	1.4	13
CW	68	
REA	.36	
MRB	.19	
SBMI	350	
SCHB	114	



BW 82  
WW 752

## CHURCHILL ADVANCE 560N 73

REG # 44667045 | HORNED | 01/07/25

**SIRE** HH ADVANCE 2116K (44346768)  
HH ADVANCE 0022H ET x HH MISS ADVANCE 0001H

**DAM** CHURCHILL LADY 3143L (44462202)  
HH ADVANCE 0159H x CHURCHILL LADY 987G

*COMPLETE & A CURVE BENDER! THINK PRIME!*

A very complete bull who is huge bodied with great numbers! This guy is good looking, thick, deep and he has a great two-year-old dam. He is a curve bender with low birth and fast early growth. With his Marb he will produce Prime carcasses and a lot of yield!

CED	7.2	20
BW	-.1	8
WW	70	7
YW	108	11
SC	1.3	21
MM	35	10
UDR	1.2	
TEAT	1.3	
CW	92	7
REA	.56	
MRB	.52	3
SBMI	405	
SCHB	178	3

BW 80  
WW 637



CHURCHILL LADY 3237L ET - \$25,000 Dam of Lot 72



CHURCHILL LADY 3143L - Dam of Lot 73





**ONE OF THE BEST L1 ANIMAL'S WE HAVE RAISED!**

This super bull and his dam are two of the best L1 animals we have ever had! He is super thick with lots of shape and a strong wide back. He is very long bodied with a great hip and hind leg. He is a calving ease curve bender with terrific carcass! His dam did a fantastic job raising him to a 834 pound 205-day weight! She was a highlight in our dispersal selling to Jeff & Tami Berger for \$42,500.

596 had an injury in late summer and one testicle has shrunk up, but at 11 months he had good semen. We feel with certainty that this is not a genetic condition. Because of this *terms will be announced sale day.*

# 74 CHURCHILL ADVANCE 596N

REG # 44667070 | HORNED | 01/14/25

**SIRE** HH ADVANCE 2116K (44346768)  
HH ADVANCE 0022H ET x HH MISS ADVANCE 0001H

**DAM** CHURCHILL LADY 346L (44462325)  
HH ADVANCE 0159H x CHURCHILL LADY 5187C

CED	9.8	9
BW	0.0	8
WW	69	9
YW	99	
SC	1.1	
MM	42	1
UDR	1.1	
TEAT	1.1	
CW	99	3
REA	.82	7
MRB	.43	6
\$BMI	436	18
SCHB	178	3

**CE** BW 78  
WW 834



CHURCHILL LADY 346L - \$42,500 Dam of Lot 74





CL 1 DOMINO 267K 1ET - Sire of Lots 75-78

## CHURCHILL DOMINO 566N **75**

REG # 44667050 | HORNED | 01/09/25

**SIRE** CL 1 DOMINO 267K 1ET (44347274)  
CL 1 DOMINO 0186H x CL 1 DOMINETTE 719E 1ET

**DAM** CHURCHILL LADY 5187C (43586837)  
HH ADVANCE 3022A ET x CHURCHILL LADY 285Z



CED	6.1	
BW	0.7	14
WW	57	
YW	94	
SC	1.3	21
MM	42	1
UDR	1.3	
TEAT	1.4	13
CW	91	7
REA	.69	17
MRB	.37	9
\$BMI	550	1
SCHB	168	5

BW 82  
WW 732

# LOTS 75-78 *Sons of* DOMINO 267K



**BULLS LIKE THIS ARE WHY THE HEREFORD BREED IS SO POPULAR  
WITH RANCHERS AND COW-CALF PRODUCERS.**

566N is well balanced with tremendous rib, a big hindquarter and strong breed character. He will sire elite steers and top-end replacement females. His dam is an outstanding 10-year-old cow, and his maternal sister sold for \$42,500 in our dispersal!

## CHURCHILL DOMINO 570N **76**

REG # 44667053 | HORNED | 01/10/25

**SIRE** CL 1 DOMINO 267K 1ET (44347274)  
CL 1 DOMINO 0186H x CL 1 DOMINETTE 719E 1ET

**DAM** CHURCHILL LADY 5168C (43586817)  
HH ADVANCE 3022A ET x CHURCHILL LADY 2158Z ET



CHURCHILL LADY 5168N - Dam of Lot 76

CED	1.5	
BW	1.8	
WW	62	
YW	99	
SC	1.2	
MM	33	15
UDR	1.3	
TEAT	1.3	
CW	94	6
REA	.69	17
MRB	.12	
\$BMI	347	
SCHB	143	19

BW 84  
WW 697



**A VERY IDEAL DOMINO BULL OUT OF A VERY IDEAL DAM!**

This cow did an awesome job raising him at 10-years-old still with a very high quality udder. This bull combines a nice balance of calving ease, growth, maternal, and carcass with a great look!





## 77 CHURCHILL DOMINO 5101N

REG # 44712697 | HORNED | 01/15/25

**SIRE** CHURCHILL STANFIELD 3122L (44462187)  
CHURCHILL ROUGHNECK 0280H ET x CHURCHILL LADY 890F

**DAM** CHURCHILL LADY 1327J ET (44672956)  
HH ADVANCE 8132F x CL 1 DOMINETTE 687D 1ET

### POWERFUL BULL OUT OF A SUPER L1 COW!

A powerful Stanfield son out of a super L1 cow that sold to L Bar W! This guy is thick butted, thick topped, and heavy boned. He shows a lot of muscle and power. His EPDs are really strong with lots of carcass.

CED	-0.2	
BW	4.9	
WW	74	4
YW	121	3
SC	1.7	5
MM	33	17
UDR	1.25	
TEAT	1.35	
CW	88	13
REA	.58	
MRB	.30	17
SBMI	376	
SCHB	148	18

BW 86  
WW 710

## 78 CHURCHILL DOMINO 5304N ET

REG # 44668686 | HORNED | 02/14/25

**SIRE** CL 1 DOMINO 267K 1ET (44347274)  
CL 1 DOMINO 0186H x CL 1 DOMINETTE 719E 1ET

**DAM** CHURCHILL LADY 7273E (43802056)  
HH ADVANCE 5044C ET x CHURCHILL LADY 5227C ET

CED	1.1	
BW	3.4	
WW	73	4
YW	118	4
SC	1.2	
MM	30	
UDR	1.3	
TEAT	1.3	
CW	91	7
REA	.53	
MRB	.41	7
SBMI	457	12
SCHB	161	8

BW 80  
WW 685



CHURCHILL LADY 7273E - Dam of Lot 78





## FALL BULLS



## BIGGER, OLDER AND MORE MATURE

This is a terrific set of fall born bulls who are big, stout, and ready to go to work!

They will sire calves who make more money by calving easily, adding pounds and producing daughters who develop into great cows. Strong carcass merit adds value all the way to the plate, ensuring a positive eating experience for the consumer. As producers, we must remember the consumer is our ultimate customer and expects a great product!





# LOTS 79-82

Sons of **LADY  
2302K**



## 79 CHURCHILL ARLO 4310M ET

REG # 44654449 | POLLED | 08/07/24

**SIRE** C ARLO 2135 ET (P44359827)

LOEWEN GENESIS G16 ET x C 88X NOTICE ME 1311 ET

**DAM** CHURCHILL LADY 2302K ET (P44474282)

CHURCHILL DESPERADO 029H x BR VALIDATED B413 6035 7098

*HE IS A TOP END KIND OF BULL!*

A really top end Arlo son out of the great 2302 female! This guy is deep, thick made, and good looking. His EPDs are extremely good: top 4 percent in Fertility, Milk, Udder, Teat, Marb, BMI, and CHB.

CED	1.3	
BW	2.7	
WW	62	
YW	102	22
SC	1.5	10
MM	40	2
UDR	1.5	2
TEAT	1.5	4
CW	81	24
REA	.45	
MRB	.49	4
\$BMI	518	3
SCHB	168	5

BW 78  
WW 660



C ARLO 2135 ET - Sire of Lots 79-81





## CHURCHILL 80 ARLO 4314M ET

REG # 44654450 | POLLED | 08/09/24

**SIRE** C ARLO 2135 ET (P44359827)  
LOEWEN GENESIS G16 ET x C 88X NOTICE ME 1311 ET

**DAM** CHURCHILL LADY 2302K ET (P44474282)  
CHURCHILL DESPERADO 029H x BR VALIDATED B413 6035 7098

*HE HAS A GREAT FUTURE IN FRONT OF HIM!*

A high-growth power bull out of a full sister to 219K! The dam of this bull was selected by our friends in Mexico at El Centro, and she is amazing! This bull is goggle-eyed with a thick butt end and a flat, level top. He has a great future!

CED	-1.5	
BW	5.0	
WW	67	13
YW	107	14
SC	1.1	
MM	41	2
UDR	1.3	
TEAT	1.2	
CW	89	10
REA	.99	2
MRB	.32	13
SBMI	407	
SCHB	164	7

BW 82  
WW 663

## CHURCHILL 81 ARLO 4308M ET

REG # 44654448 | HOMO POLL | 08/06/24

**SIRE** C ARLO 2135 ET (P44359827)  
LOEWEN GENESIS G16 ET x C 88X NOTICE ME 1311 ET

**DAM** CHURCHILL LADY 2302K ET (P44474282)  
CHURCHILL DESPERADO 029H x BR VALIDATED B413 6035 7098

CED	2.0	
BW	3.5	
WW	68	10
YW	108	12
SC	1.4	15
MM	33	16
UDR	1.5	2
TEAT	1.5	4
CW	74	
REA	.63	23
MRB	.34	11
SBMI	499	5
SCHB	144	19

BW 84  
WW 657

## CHURCHILL 82 PINSTRIPE 4303M ET

REG # 44654444 | HOMO POLL | 08/03/24

**SIRE** 77 PINSTRIPE 76D 73G (P44121402)  
KCF BENNETT HOMEWARD C776 x 77 MISS TRUSTI67Y 36U 76D

**DAM** CHURCHILL LADY 2302K ET (P44474282)  
CHURCHILL DESPERADO 029H x BR VALIDATED B413 6035 7098

*ONE OF OUR MOST INTERESTING BULLS!*

He is dark red, with pigment & typical Hereford markings. He is super long bodied, with extra shape, frame, & structure. His dam is a full sister to 219K, and his sire is very impressive. His EPDs are strong, with top-end maternal and carcass traits. In some countries, he would be a top AI sire!

CED	3.1	
BW	2.4	
WW	68	11
YW	113	6
SC	0.7	
MM	33	16
UDR	1.4	9
TEAT	1.4	13
CW	82	22
REA	.94	3
MRB	.57	2
SBMI	414	
SCHB	180	3

BW 76  
WW 665



CHURCHILL LADY 4317M ET - \$35K Full Sib to Lot 82 - Maternal Sib to Lots 79-81





LOT 83

## 83 CHURCHILL GUNSMOKE 4345M ET

REG # 44664136 | POLLED | 10/19/24

**SIRE** STELLPFLUG GUNSMOKE 222 ET (P44400396)  
JDH AH BENTON 8G ET x NJW 202C 4013 HOMEMAKER 90H ET

**DAM** BR VALIDATED B413 6035 7098 (P43857421)  
EFBEEF BR VALIDATED B413 x BR BENNETT 4R Y428 2101 6035

*THIS GUNSMOKE x 7098 IS A POWERHOUSE!*

This powerful late October calf is super long bodied with lots of butt and shape. He's a high-performance bull with excellent pigment & exceptional EPDs in every area! Here's an older 7098 son you can turn out with the cow herd.

CED	3.1	
BW	1.5	25
WW	62	
YW	101	23
SC	1.2	
MM	34	13
UDR	1.5	2
TEAT	1.5	4
CW	84	18
REA	1.00	2
MRB	.69	1
\$BMI	525	2
SCHB	193	1

BW 75  
WW 720

## 84 CHURCHILL STEADFAST 4346M ET

REG # 44661254 | HOMO POLL | 11/04/24

**SIRE** NJW 202C173DSTEADFAST 156J ET (P44276463)  
NJW 79Z Z311 ENDURE 173D ET x NJW 160Z 8Y HOME MAKER 202C

**DAM** BR VALIDATED B413 6035 7098 (P43857421)  
EFBEEF BR VALIDATED B413 x BR BENNETT 4R Y428 2101 6035

*A 7098 DIAMOND IN THE ROUGH!*

This 7098 son was born very late in the fall season, and we weaned him at four months by mistake. Although this set him back, his genetics for CE, fertility, maternal strength & carcass are second to none. Use this diamond in the rough on your heifers!

CED	7.0	21
BW	1.1	19
WW	59	
YW	92	
SC	1.6	6
MM	36	6
UDR	1.6	1
TEAT	1.5	4
CW	81	24
REA	.99	2
MRB	.59	2
\$BMI	566	1
SCHB	180	3

BW 72  
WW 625



BR VALIDATED B413 6035 7098 - Dam of Lots 83 & 84



BR VALIDATED B413 6035 7098 - Dam of Lots 83 & 84





## LOT 85

### CHURCHILL RED CLOUD 4330M **85**

REG # 44654462 | HOMO POLL | 09/12/24

**SIRE** CHURCHILL RED CLOUD 0376H ET (P44273826)  
CHURCHILL RED BARON 8300F ET  $\times$  BR VALIDATED B413 6035 7098

**DAM** CHURCHILL LADY 136J (P44267944)  
DM ALL AROUND 904G ET  $\times$  CHURCHILL LADY 837F

**BIG TIME HERD BULL WITH A BRIGHT FUTURE!**

This guy is *really good* with pigment, balance, power, and structure all wrapped into one. He's homozygous with top 1% EPDs in these hard to get areas: Fertility, Udder, Teat and carcass. Plus he's top 1% BMI and top 3% CHB! His dam is an awesome young cow with a very good udder!

CED	5.2	
BW	1.2	20
WW	62	
YW	96	
SC	1.5	10
MM	39	3
UDR	1.6	1
TEAT	1.7	1
CW	94	6
REA	.95	3
MRB	.40	7
\$BMI	629	1
SCHB	177	3



BW 78  
WW 640

### CHURCHILL RED CLOUD 4328M **86**

REG # 44654461 | POLLED | 09/07/24

**SIRE** CHURCHILL RED CLOUD 0376H ET (P44273826)  
CHURCHILL RED BARON 8300F ET  $\times$  BR VALIDATED B413 6035 7098

**DAM** CHURCHILL LADY 3138A (43377018)  
H H PERFECT TIMING 0150 ET  $\times$  CHURCHILL LADY 0209X

CED	0.4	
BW	2.1	
WW	60	
YW	94	
SC	1.7	4
MM	33	16
UDR	1.5	2
TEAT	1.6	1
CW	79	
REA	.86	5
MRB	.21	
\$BMI	493	5
SCHB	138	24

BW 78  
WW 641

### CHURCHILL RED CLOUD 4325M **87**

REG # 44654460 | POLLED | 08/28/24

**SIRE** CHURCHILL RED CLOUD 0376H ET (P44273826)  
CHURCHILL RED BARON 8300F ET  $\times$  BR VALIDATED B413 6035 7098

**DAM** CHURCHILL LADY 120J (44268908)  
CL 1 DOMINO 942G  $\times$  CHURCHILL LADY 902G ET

**A FANTASTIC RED CLOUD SON!**

A fantastic Red Cloud son with power, structure, and numbers! His dam has been a super producer for Jack Hickey every year. Look at the length, shape and color of this guy! His udder quality is top 1 percent and his BMI is top 4 percent and CHB top 10 percent.

CED	1.2	
BW	3.0	
WW	73	4
YW	116	5
SC	1.6	6
MM	28	
UDR	1.5	2
TEAT	1.4	13
CW	74	
REA	.44	
MRB	.22	
\$BMI	526	2
SCHB	132	

BW 78  
WW 641



CHURCHILL RED CLOUD 0376H ET - Sire of Lots 85-87





CHURCHILL W4 SHERMAN 2157K ET - Sire of Lots 88-93

## 88 CHURCHILL SHERMAN 4339M

REG # 44654469 | HOMO POLL | 09/17/24

**SIRE** CHURCHILL W4 SHERMAN 2157K ET (P44378036)  
KCF BENNETT RESOLVE G595  $\times$  CHURCHILL LADY 079H ET

**DAM** CHURCHILL LADY 276K (P44378169)  
BIRDWELL VANGUARD 5022 9337  $\times$  CHURCHILL LADY 051H

CED	1.8	
BW	1.7	
WW	62	
YW	106	15
SC	1.6	6
MM	30	
UDR	1.2	
TEAT	1.2	
CW	76	
REA	.76	11
MRB	.54	3
SBMI	427	21
SCHB	170	5

BW 75  
WW 592



CHURCHILL LADY 1221J ET - \$45,000 Dam of Lot 89 & Laredo 3146L

## 89 CHURCHILL JR SHERMAN 4334M

REG # 44654465 | HOMO POLL | 09/15/24

**SIRE** CHURCHILL W4 SHERMAN 2157K ET (P44378036)  
KCF BENNETT RESOLVE G595  $\times$  CHURCHILL LADY 079H ET

**DAM** CHURCHILL LADY 1221J ET (P44267908)  
CHURCHILL BROADWAY 858F  $\times$  BR VALIDATED B413 6035 7098

CED	7.7	17
BW	-2.1	3
WW	51	
YW	83	
SC	1.1	
MM	35	10
UDR	1.5	2
TEAT	1.6	1
CW	65	
REA	.84	6
MRB	.70	1
SBMI	536	2
SCHB	160	8

*A LOW BW SHERMAN OUT OF THE GREAT 1221!*

A lower-BW Sherman son out of the great 1221 donor that is loaded with maternal and carcass traits! He is dark red, balanced, and really correct in his makeup. He is in the top 2% for Fertility, Udder, Teat, and Marb!

**CE** BW 71  
WW 605



CHURCHILL LADY 2123K - \$16,000 Dam of Lot 90

## 90 CHURCHILL SHERMAN 4335M

REG # 44654466 | POLLED | 09/16/24

**SIRE** CHURCHILL W4 SHERMAN 2157K ET (P44378036)  
KCF BENNETT RESOLVE G595  $\times$  CHURCHILL LADY 079H ET

**DAM** CHURCHILL LADY 2123K (44378005)  
CL 1 DOMINO 0186H  $\times$  CHURCHILL LADY 9117G

CED	2.6	
BW	2.6	
WW	73	4
YW	117	4
SC	1.6	6
MM	32	21
UDR	1.4	9
TEAT	1.4	13
CW	88	11
REA	.83	7
MRB	.40	7
SBMI	473	8
SCHB	167	6

BW 74  
WW 692

## 91 CHURCHILL SHERMAN 4342M

REG # 44654472 | SCURS | 10/07/24

**SIRE** CHURCHILL W4 SHERMAN 2157K ET (P44378036)  
KCF BENNETT RESOLVE G595  $\times$  CHURCHILL LADY 079H ET

**DAM** CHURCHILL LADY 2269K (P44654297)  
CHURCHILL RED BARON 8300F ET  $\times$  CHURCHILL LADY 9468G

CED	4.3	
BW	1.0	18
WW	65	16
YW	107	13
SC	1.4	15
MM	28	
UDR	1.3	
TEAT	1.3	
CW	86	13
REA	.88	5
MRB	.20	
SBMI	511	3
SCHB	155	11

BW 70  
WW 571

## 92 CHURCHILL SHERMAN 4341M

REG # 44654471 | SCURS | 09/26/24

**SIRE** CHURCHILL W4 SHERMAN 2157K ET (P44378036)  
KCF BENNETT RESOLVE G595  $\times$  CHURCHILL LADY 079H ET

**DAM** CHURCHILL LADY 2214K (44378088)  
CHURCHILL ROUGHNECK 0280H ET  $\times$  CHURCHILL LADY 2162Z ET

CED	2.3	
BW	1.9	
WW	62	
YW	94	
SC	1.4	15
MM	30	
UDR	1.4	9
TEAT	1.5	4
CW	75	
REA	.68	18
MRB	.32	13
SBMI	453	13
SCHB	145	18

BW 79  
WW 570





## CHURCHILL SHERMAN 4338M 93

REG # 44699376 | POLLED | 09/22/24

**SIRE** CHURCHILL W4 SHERMAN 2157K ET (P44378036)  
KCF BENNETT RESOLVE G595  $\times$  CHURCHILL LADY 079H ET

**DAM** CHURCHILL LADY 2260K (P44488529)  
CHURCHILL RED BARON 8300F  $\times$  RMB 88X SOUTHERN BELLE 607C

*AN IDEAL RANCHER BULL FOR BLACK COWS!*

This is a great looking Sherman bull with dark color and lots of pigment! He is a pretty ideal rancher bull to breed to black cows! Look at the muscle shape, bone and structure he has! Excellent proven dam and excellent numbers too!

CED	-1.7	
BW	4.5	
WW	71	6
YW	116	5
SC	1.7	4
MM	19	
UDR	1.3	
TEAT	1.3	
CW	86	13
REA	.93	3
MRB	.21	
SBMI	320	
SCHB	153	12

BW 78  
WW 690

## CHURCHILL MONUMENT 4323M ET 94

REG # 44654458 | HOMO POLL | 08/23/24

**SIRE** KCF BENNETT MONUMENT J338 (P44320126)  
KCF BENNETT B716 F597  $\times$  KCF MISS LANDMARK G301

**DAM** BR SHF PRIME DESIGN 5042 9345 (P44022004)  
EFBEEF BR VALIDATED B413  $\times$  BR DISTICTION 2005 2120 5042

Two full brothers with calving ease and some of the highest Marb scores in the breed!

*If you want prime carcasses, they will produce them!*

CED	10.1	8
BW	-2.5	2
WW	56	
YW	82	
SC	1.4	15
MM	33	15
UDR	1.4	9
TEAT	1.5	4
CW	75	
REA	.49	
MRB	.87	1
SBMI	505	4
SCHB	194	1

**CE** BW 65  
WW 536

## CHURCHILL MONUMENT 4326M ET 95

REG # 44661167 | HOMO POLL | 08/29/24

**SIRE** KCF BENNETT MONUMENT J338 (P44320126)  
KCF BENNETT B716 F597  $\times$  KCF MISS LANDMARK G301

**DAM** BR SHF PRIME DESIGN 5042 9345 (P44022004)  
EFBEEF BR VALIDATED B413  $\times$  BR DISTICTION 2005 2120 5042

Two full brothers with calving ease and some of the highest Marb scores in the breed!

*If you want prime carcasses, they will produce them!*

CED	11.3	5
BW	-2.8	2
WW	55	
YW	81	
SC	1.6	6
MM	37	6
UDR	1.4	9
TEAT	1.4	13
CW	81	23
REA	.41	
MRB	.93	1
SBMI	497	5
SCHB	207	1

**CE** BW 77  
WW 618



CHURCHILL BR LADY 4324 - \$21K Full Sister to Lots 94 & 95





## LOT 96

### GREAT CALVING EASE BULL!

A great bull with calving ease to breed heifers to and maternal to make the best in cows! His dam is a big powerful 0186 cow with loads of quality!

CHURCHILL LADY 2220K - \$24K Dam of Lot 96



## 96 CHURCHILL DOMINO 4321M

REG # 44654456 | HORNED | 08/17/24

**SIRE** CL 1 DOMINO 1115J 1ET (44259270)  
CL 1 DOMINO 9108G 1ET x CL 1 DOMINETTE 713E 1ET

**DAM** CHURCHILL LADY 2220K (44378094)  
CL 1 DOMINO 0186H x CHURCHILL LADY 717E ET



BW 70  
WW 607

CED	10.1	8
BW	1.1	19
WW	65	18
YW	104	18
SC	1.2	
MM	34	13
UDR	1.4	9
TEAT	1.5	4
CW	89	10
REA	.56	
MRB	.12	
\$BMI	420	24
SCHB	139	24

## 97 CHURCHILL WINCHESTER 4329M ET

REG # 44663852 | HORNED | 09/09/24

**SIRE** BR GKB WINCHESTER 1314 (44300997)  
BR BELLE AIR E133 ET x BR ANASTASIA E117 ET

**DAM** CL 1 DOMINETTE 687D 1ET (43691979)  
HH ADVANCE 1013Y ET x CL 1 DOMINETTE 440P 1ET

BW 94  
WW 689

CED	-6.0	
BW	6.0	
WW	65	16
YW	103	20
SC	1.6	6
MM	20	
UDR	1.3	
TEAT	1.3	
CW	60	
REA	.23	
MRB	.24	23
\$BMI	324	
SCHB	114	



## LOT 97

### NOW HE IS A BRUTE!

A powerhouse bull out of the immortal 687 cow! Look at the mass and volume and performance of this guy! Now he is a brute!

CL 1 DOMINETTE 687D 1ET - Dam of Lot 97







## CHURCHILL MERIT 4300M ET **98**

REG # 44654442 | SCURS | 07/31/24

**SIRE** JW 1857 MERIT 21134 (P44212986)  
JW X651 TESTED 1857 ET x JW 33Z VICTORIA 19027

**DAM** H BL FIRST LADY 1101 ET (44269939)  
H THE PROFIT 8426 ET x H AC MARIANNE 231 ET

CED	4.5	
BW	2.5	
WW	79	1
YW	132	1
SC	1.5	10
MM	29	
UDR	1.4	9
TEAT	1.3	
CW	98	3
REA	.86	5
MRB	.43	6
SBMI	487	6
SCHB	193	1

### BIG-TIME PERFORMANCE & CARCASS!

A powerful Merit son with big-time performance and carcass! He is thick made, deep ribbed, and stout. He ranks in the top 1% for WW and YW, along with CHB, so he will sire heavy calves that grade very well.

BW 76  
WW 647



CHURCHILL LADY 4313M ET - \$25K Full Sister to Lot 98







## 2-YR-OLDS



## HIGH QUALITY AND READY TO TURN OUT

This is a small but outstanding set of coming two-year-olds! These bulls are big, stout, and ready to go to work.

They will sire calves that make more money—calving easily, adding pounds, and producing daughters that develop into great cows. Add in the fact that these bulls also offer strong carcass merit, and the person eating the steaks will be very happy as well. As producers, let's not forget that the consumer is our ultimate customer, and they want a great product!





## CHURCHILL DOMINO 4234M 99

REG # 44635489 | HORNED | 04/15/24

**SIRE** CL 1 DOMINO 0186H (44139007)  
HH ADVANCE 7156E ET x CL 1 DOMINETTE 6162D

**DAM** CL 1 DOMINETTE 719E 1ET (43800294)  
CL 1 DOMINO 215Z x CL 1 DOMINETTE 4176B

CED	2.1	
BW	1.2	20
WW	66	14
YW	108	12
SC	1.3	21
MM	26	
UDR	1.4	9
TEAT	1.5	4
CW	86	14
REA	.59	
MRB	.25	21
\$BMI	352	
SCHB	146	17

BW 78  
WW 688

### STRAIGHT LINE ONE GENETICS AT THEIR BEST!

A very strong April coming two-year-old that is a full brother to the powerful herd sire 267k! This guy is deep sided, good looking, and has the right color and pigment. He moves free and easy and looks like a herd bull. His powerful dam sold to Lee Butler and Jamison Ranch while a maternal brother sold to Michael Harless and Jim Coley. Straight L1 genetics at its best right here!



CL 1 DOMINETTE 719E 1ET - \$40K Dam of 4234



CL 1 DOMINO 267K 1ET - Full Brother to Lot 99



RED DOMINO 3288L - \$15K Maternal Sib



CHURCHILL ADVANCE 4201M - \$19K Mat. Sib





## 100 CHURCHILL DOMINO 4232M

REG # 44635488 | HORNED | 04/10/24

**SIRE** CL 1 DOMINO 0186H (44139007)

HH ADVANCE 7156E ET x CL 1 DOMINETTE 6162D

**DAM** CHURCHILL LADY 978G ET (44053404)

NJW LONG HAUL 36E ET x DM BR SAVANNA 714 ET

### POWERFUL BULL OUT OF THE UDDER QUEEN!

A powerful 0186H coming two-year-old out of the Udder Queen 978! He is stout, thick and full of muscle. He is a strong growth bull with the very best in milk & udder quality.

CED	2.3	
BW	2.1	
WW	71	6
YW	115	5
SC	1.8	3
MM	40	2
UDR	1.5	2
TEAT	1.7	1
CW	88	11
REA	1.02	2
MRB	.12	
SBMI	425	22
SCHB	144	19

BW 82  
WW 743



CHURCHILL LADY 978G "The Udder Queen" - Dam of Lot 100

## 101 CHURCHILL SHERMAN 4177M

REG # 44561600 | HOMO POLL | 02/23/24

**SIRE** CHURCHILL W4 SHERMAN 2157K ET (P44378036)

KCF BENNETT RESOLVE G595 x CHURCHILL LADY 079H ET

**DAM** CHURCHILL LADY 0166H (P44149772)

NJW LONG HAUL 36E ET x CHURCHILL LADY 7255E

CED	10.3	7
BW	-1.2	4
WW	56	
YW	85	
SC	0.9	
MM	34	12
UDR	1.3	
TEAT	1.4	13
CW	81	24
REA	1.03	2
MRB	.23	24
SBMI	458	12
SCHB	144	19

**CE** BW 72  
WW 660



CHURCHILL W4 SHERMAN 2157K ET - Sire of Lot 101





## ET HEIFERS



## NUMBERS & QUALITY - THEY'RE GREAT!

This group of heifers is just phenomenal! They were not ready to sell at the dispersal, so we announced that we were holding them for this sale. Every one is a donor candidate, and every one has the numbers and quality to make a huge difference in your herd!

If the buyer wants, we can have them flushed for you here at our ranch after the sale. We are really proud of this set of elite heifer calves!





# 102 CHURCHILL LADY 4515M ET

REG # 44671980 | HORNED | 12/16/24

**SIRE** STELLPFLUG THEN SOME ET (P44493285)

JDH AH BENTON 8G ET x CHURCHILL LADY 0336H

**DAM** CHURCHILL LADY 079H ET (P44149885)

EXR BANKROLL 8130 ET x CHURCHILL LADY 7189E ET

CED	2.1	
BW	1.6	
WW	64	20
YW	101	23
SC	1.5	10
MM	28	
UDR	1.3	
TEAT	1.3	
CW	85	15
REA	.80	8
MRB	.38	8
\$BMI	500	4
\$CHB	159	9

## DARK RED WITH A WORLD OF POTENTIAL!

She looks a great deal like her dam 079H when she was young. She is super long bodied with lots of rib shape! She has the right combination of traits and dollar indexes to produce really valuable progeny!



CHURCHILL LADY 079H ET - \$65,000 Dam of Lot 102



CHURCHILL W4 LADY 4144M - \$52.5K Maternal Sib



CHURCHILL LADY 433M ET - \$45K Maternal Sib



CHURCHILL W4 SHERMAN 2157K ET - Maternal Sib





## CHURCHILL LADY 4500M ET **103**

REG # 44659705 | HOMO POLL | 12/29/24

**SIRE** STELLPFLUG THEN SOME ET (P44493285)  
JDH AH BENTON 8G ET x CHURCHILL LADY 0336H

**DAM** CHURCHILL LADY 3314L ET (P44504281)  
RST FINAL PRINT 0016 x H BL FIRST LADY 1101 ET

CED	-1.5	
BW	4.6	
WW	79	1
YW	123	2
SC	1.1	
MM	27	
UDR	1.4	9
TEAT	1.5	4
CW	97	4
REA	1.08	1
MRB	.05	
\$BMI	471	9
SCHB	147	16

A totally unique homozygous polled heifer, different than anything we have produced! She has dominated this calf crop right from the start. She is super long-bodied, extremely thick, bigger framed, very wide based, upheaded, clean made and loaded with power!

Her pedigree is unlike any other homozygous polled Herefords. Her EPDs are stellar, with high growth, high udder scores, big carcass, and very strong dollar indexes. If mated properly, she has the ability to produce as much or more revenue in the next few years as any female we have produced.

**CHURCHILL FIRST CLASS 4503 ET**  
Full Sib to Lot 103 - He sells as Lot 65



STELLPFLUG THEN SOME - Sire of Lots 102-104



OVER THE YEARS, WE'VE MADE OUR  
BIGGEST IMPACT BY BEING DIFFERENT.  
THIS HEIFER IS AS DIFFERENT AS IT GETS.





## LOT 104

***SHE HAS A WORLD OF POTENTIAL!***

A dark red heifer with a world of potential! She looks a great deal like her dam 079H when she was young. She is super long bodied with lots of rib shape! She has the right combination of traits and dollar indexes to produce really valuable progeny!



**CHURCHILL LADY 5157N ET - \$25K Full Sib to Lot 104**



**CHURCHILL STAMPEDE 486M ET - \$220K Maternal Brother to Lots 104-106**

## 104 CHURCHILL LADY 4512M ET

REG # 44671979 | HORNED | 12/28/24

**SIRE** STELLPFLUG THEN SOME ET (P44493285)

JDH AH BENTON 8G ET x CHURCHILL LADY 0336H

**DAM** CHURCHILL LADY 219K ET (P44378076)

CHURCHILL DESPERADO 029H x BR VALIDATED B413 6035 7098

CED	-0.5	
BW	2.9	
WW	66	15
YW	106	14
SC	1.1	
MM	31	
UDR	1.4	9
TEAT	1.4	13
CW	71	
REA	.82	7
MRB	.56	2
\$BMI	498	5
SCHB	159	9



**LOTS 104-106**  
**219K** *Daughters*



## LOT 105

### A POWERFUL DONOR PROSPECT!

A powerful Gunsmoke heifer out of 219K! Her two full sisters were highlights in September, selling for \$60,000 and \$40,000. This heifer is really stout with huge body dimension. She ranks in the top 2% for WW and YW while having really good udder scores and a huge .64 for Marb! Her BMI is top 7%, and CHB is top 2%. She is a powerful donor prospect!



CHURCHILL LADY 4508M ET - \$60K Full Sib to Lots 105 & 106



## CHURCHILL LADY 4510M ET 105

REG # 44672903 | POLLED | 12/29/24

**SIRE** STELLPFLUG GUNSMOKE 222 ET (P44400396)  
JDH AH BENTON 8G ET x NJW 202C 4013 HOMEMAKER 90H ET

**DAM** CHURCHILL LADY 219K ET (P44378076)  
CHURCHILL DESPERADO 029H x BR VALIDATED B413 6035 7098

CED	1.4	
BW	1.8	
WW	71	6
YW	123	2
SC	0.9	
MM	32	19
UDR	1.4	9
TEAT	1.4	13
CW	86	14
REA	.72	14
MRB	.64	1
\$BMI	485	6
SCHB	190	2

## CHURCHILL LADY 5300N ET 106

REG # 44668211 | POLLED | 02/03/25

**SIRE** STELLPFLUG GUNSMOKE 222 ET (P44400396)  
JDH AH BENTON 8G ET x NJW 202C 4013 HOMEMAKER 90H ET

**DAM** CHURCHILL LADY 219K ET (P44378076)  
CHURCHILL DESPERADO 029H x BR VALIDATED B413 6035 7098

CED	2.0	
BW	2.0	
WW	67	12
YW	113	7
SC	1.3	21
MM	34	14
UDR	1.5	2
TEAT	1.5	4
CW	84	17
REA	.75	11
MRB	.66	1
\$BMI	492	5
SCHB	187	2

## LOT 106

### YOU WILL REALLY LIKE HER!

I think you will really like the type and look of this neat-colored 219K daughter! She has great pigment and spots on her face. She is moderate and will be a very fancy young cow. She ranks very high in all the important traits, with top 1% Marb. Her dollar indexes are stellar as well!



CHURCHILL LADY 4509M ET - \$40K Full Sib to Lots 105 & 106







H BL FIRST LADY 1101 ET - \$45K Dam of Lot 107

## 107 CHURCHILL JR LADY 5311N ET

REG # 44667016 | POLLED | 02/08/25

**SIRE** CHURCHILL W4 SHERMAN 2157K ET (P44378036)  
KCF BENNETT RESOLVE G595 x CHURCHILL LADY 079H ET

**DAM** H BL FIRST LADY 1101 ET (44269939)  
H THE PROFIT 8426 ET x H AC MARIANNE 231 ET

CED	0.3	
BW	3.1	
WW	63	
YW	104	20
SC	1.0	
MM	26	
UDR	1.3	2
TEAT	1.3	1
CW	89	12
REA	.98	3
MRB	.36	11
\$BMI	438	20
SCHB	172	5



CHURCHILL LADY 3121L ET - GKB's \$220,000 Dam of Lot 108

## 108 CHURCHILL LADY 4507M ET

REG # 44671978 | POLLED | 12/29/24

**SIRE** CHURCHILL W4 SHERMAN 2157K ET (P44378036)  
KCF BENNETT RESOLVE G595 x CHURCHILL LADY 079H ET

**DAM** CHURCHILL LADY 3121L ET (P44462186)  
RST FINAL PRINT 0016 x BR VALIDATED B413 6035 7098

CED	-1.5	
BW	2.0	
WW	69	9
YW	102	22
SC	1.5	10
MM	27	
UDR	1.6	1
TEAT	1.7	1
CW	93	6
REA	1.08	1
MRB	.72	1
\$BMI	539	2
SCHB	199	1

***SHE IS JUST INCREDIBLE!***

A breed-impacting female out of two of the best individuals we've ever had! This heifer is huge bodied and very feminine & attractive. I love her rib shape, capacity and thickness! Her numbers will put any breeder in the driver's seat. Fast growth, high fertility, the very best udder scores, + top 1% Marb & Ribeye! How do you top that? 200 CHB and a 541 BMI. She's just incredible!







## CHURCHILL LADY 4504M ET **109**

REG # 44683760 | HOMO POLL | 12/19/24

**SIRE** KCF BENNETT MONUMENT J338 (P44320126)  
KCF BENNETT B716 F597 *x* KCF MISS LANDMARK G301

**DAM** BR VALIDATED B413 6035 7098 (P43857421)  
EFBEEF BR VALIDATED B413 *x* BR BENNETT 4R V428 2101 6035

CED	10.1	8
BW	-1.3	4
WW	61	
YW	87	
SC	1.1	
MM	41	2
UDR	1.4	9
TEAT	1.4	13
CW	80	25
REA	1.01	2
MRB	.80	1
\$BMI	543	2
SCHB	201	1

### AN INCREDIBLE GENETIC PACKAGE OUT OF 7098!

She is an efficient maternal masterpiece with calving ease and carcass! Top 4% BW, Fertility, Milk, and maternal cow weight. Also top 2% Ribeye, Marb, BMI, and CHB!

*This is the last 7098 daughter we will sell.*

*the last*  
**7098 DAUGHTER  
WE WILL EVER SELL!**



KCF BENNETT MONUMENT J338 - Sire of Lot 109







## LOT 110

*DON'T LET HER PASS YOU BY!*

An outstanding daughter of the "Udder Queen" & Arlo! She has excellent numbers for growth, maternal, and carcass. Look at her shape and overall quality! These 978 daughters are precious females; don't let this one pass you by!

**CHURCHILL LADY 978G ET - Dam of Lot 109**



## 110 CHURCHILL JR LADY 5312N ET

REG # 44667017 | POLLED | 02/11/25

**SIRE** C ARLO 2135 ET (P44359827)  
LOEWEN GENESIS G16 ET x C 88X NOTICE ME 1311 ET

**DAM** CHURCHILL LADY 978G ET (44053404)  
NIJW LONG HAUL 3GE ET x DM BR SAVANNA 714 ET

CED	1.9	
BW	4.1	
WW	65	18
YW	105	16
SC	1.3	21
MM	38	5
UDR	1.4	9
TEAT	1.5	4
CW	78	
REA	.66	20
MRB	.18	
SBMI	445	15
SCHB	142	21

## 111 CHURCHILL JLC LADY 599N

REG # 44667072 | HOMO POLL | 01/15/25

**SIRE** CHURCHILL SMOKEY 3128L ET (P44462190)  
RST FINAL PRINT 0016 x BR VALIDATED B413 6035 7098

**DAM** CHURCHILL LADY 307L (P44486416)  
JW 1857 MERIT 21134 x CHURCHILL LADY 0368H ET

CED	5.4	
BW	0.2	10
WW	74	3
YW	111	9
SC	1.5	10
MM	44	1
UDR	1.7	1
TEAT	1.7	1
CW	94	5
REA	.88	5
MRB	.26	20
SBMI	592	1
SCHB	156	10



## LOT 111 SHE IS FABULOUS!

This homozygous polled Smokey heifer out of the fabulous 307 donor is a fantastic individual! She has rib and shape with a great female look. She is a calving-ease heifer with growth. Her fertility, milk, udder, & teat #s are all in the top 1%! Her carcass numbers are very good as well. These Smokey heifers will be ideal for profit-minded cattle people, and this one is a natural calf out of one of the best two-year-olds we have ever had.

*Owned with Jennings Land & Cattle.*

**CHURCHILL LADY 307L - Dam of Lot 111**







---

---

## 5 BLACK BALDY HEIFER CALVES **112**

BORN MARCH & APRIL 2025

SIRED BY BIRDWELL NEW STANDARD & CHURCHILL G4G THOMAS 3202L

*Super good replacements with top end maternal and carcass!*

Buyer pays delivery cost. Bangs vaccinated.

---

---

## 5 RED BALDY HEIFER CALVES **113**

BORN MARCH & APRIL 2025

SIRED BY BIRDWELL NEW STANDARD & CHURCHILL G4G THOMAS 3202L

*Super good replacements with top end maternal and carcass!*

Buyer pays delivery cost. Bangs vaccinated.







## DONOR, PREGNANCIES & EMBRYOS



## THE LAST OF OUR FROZEN GENETICS

**PREGNANCIES** These pregnant recipients carry some of the very best genetics we have produced! They were implanted in late fall with embryos that did not make the dispersal. The recip's have been in our herd for at least 18 months and will calve in the fall of 2026.

**EMBRYOS** Due to time constraints, a large group of embryos was not included in the dispersal. Many were stored in our ranch tanks as we planned to implant them, but ran short of recip's. These embryos represent our best matings, both past & present.

**SEMEN** We have several hundred straws of semen from both current and past herd sires, selling with the tank that is holding them.





## CHURCHILL LADY 311L ET 114

REG # 44462184 | POLLED | 01/05/23

**SIRE** KJ TWJ 907E LIBERTY 159H ET (44222757)  
KJ BJ 309C LEADER 182F X KJ BJ 339A CHARDONNAY 907E ET

**DAM** CHURCHILL LADY 0403H ET (44245920)  
EFBEEF BR VALIDATED B413 X SR CCC LADYSPORT 2205 Z ET

BRED TO STELLPFLUG THEN SOME ET AI BRED ON 12/04/25

HERE'S YOUR CHANCE TO OWN THIS BEAUTIFUL DONOR!

A beautiful Liberty two-year-old out of 0403H! She has tons of eye appeal and great shape and depth. She flushes really well, and both pregnant recipes and embryos sell out of her. She is being offered by Dr. Bob Sager, with possession available in March after she weans off her bull calf, which will be kept by Dr. Sager. She can be flushed immediately after the sale here at our facility.

CED	-1.3	
BW	3.1	
WW	60	
YW	100	
SC	1.4	17
MM	41	2
UDR	1.3	
TEAT	1.1	
CW	85	19
REA	.86	6
MRB	.28	20
SBMI	445	17
SCHB	153	14

## PREGNANCIES 311L X CC 133J 25K LIFETIME 15M 114

168 4-YEAR-OLD BLACK COW DUE 08/08/26  
9828 6-YEAR-OLD BLACK COW DUE 08/08/26  
3526 2-YEAR-OLD BLACK COW DUE 08/08/26

A  
B  
C

## IVF EMBRYOS CHURCHILL LADY 311L ET 114

(4 FEMALE) 311L X CC 133J 25K LIFETIME 15M  
(4 FEMALE) 311L X CC 133J 25K LIFETIME 15M  
(6) 311L X CHURCHILL W4 SHERMAN 2157K ET

D  
E  
F



CHURCHILL EVE 3320L - Haxton Hoffman's Maternal Sib



CHURCHILL LADY 0403H - \$67,500 Dam of Lot 144



CC 133J 25K LIFETIME 15M - Sire of Lot 114A-C Pregnancies





3121L



307L



486M

# PREGS & EMBRYOS

## 115 PREGNANCIES 3121L X TOUCHDOWN 3535L

- A** 826 7-YEAR-OLD BLACK COW DUE 08/08/26
- B** 217 3-YEAR-OLD BWF COW DUE 08/08/26
- C** 2014 3-YEAR-OLD BLACK COW DUE 08/08/26
- D** 3275 2-YEAR-OLD RWF COW DUE 08/08/26
- E** Y035 5-YEAR-OLD BLACK COW DUE 08/08/26

### IVF EMBRYOS CHURCHILL LADY 3121L ET

- F** (4) 3121L X B&C TOUCHDOWN 3535L ET
- G** (5) 3121L X /S PROFOUND 44041

## 116 PREGNANCIES 307L X STAMPEDE 486M

- A** 545 10-YEAR-OLD HEREFORD DUE 08/08/26
- B** 23 3-YEAR-OLD BLACK BALDY DUE 08/08/26

### IVF EMBRYOS CHURCHILL LADY 307L ET

- C** (4 FEMALE) 307L X CHURCHILL STAMPEDE 486M
- D** (4 FEMALE) 307L X CHURCHILL STAMPEDE 486M
- E** (4) 307L X STELLPFLUG THEN SOME
- F** (5) 307L X STELLPFLUG THEN SOME
- G** (7) 307L X CHURCHILL LAREDO 3146L

## 117 PREGNANCIES 466M X STAMPEDE 486M

- A** Y0611 5-YEAR-OLD RED COW DUE 08/08/26
- B** 9431 6-YEAR-OLD HEREFORD DUE 08/08/26

### FOREIGN QUALIFIED IVF EMBRYOS CHURCHILL LADY 466M ET

- C** (4) 466M X CHURCHILL STAMPEDE 486M



# CHURCHILL EMBRYOS

## IVF EMBRYOS CHURCHILL LADY 0403H ET 118

(4 FEMALE) 0403H X BIRDWELL NEW STANDARD 2912

(6 FEMALE) 0403H X BIRDWELL NEW STANDARD 2912

(4) 0403H X CHURCHILL STAMPEDE 486M

(3 FOREIGN QUALIFIED) 0403H X STAMPEDE 486M

(1) 0403H X STELLPFLUG THEN SOME

A  
B  
C  
D  
E



0403H



079H

## 4 IVF EMBRYOS CHURCHILL LADY 079H X THEN SOME 119

## 4 IVF EMBRYOS CHURCHILL LADY 023H X STANFIELD 120

## 4 IVF EMBRYOS LADY 2294K X NEW STANDARD 121

## IVF EMBRYOS CHURCHILL LADY 2322K ET 122

(4 FOREIGN QUALIFIED) 2322K X HH ADVANCE 3107L

(5) 2322K X HH ADVANCE 3107L

A  
B



023H



2294K

## 6 IVF EMBRYOS CHURCHILL LADY 2302K ET 123

(4) 2302K X C ARLO 2135 + (2) 2302K X 77 PINSTRIPE 76D 73G



2322K



2302K





# CHURCHILL EMBRYOS

124

IVF EMBRYOS

**CL 1 DOMINETTE 719E**

(4) 719E X BIRDWELL NEW STANDARD 2912

125

IVF EMBRYOS

**CL 1 DOMINETTE 687D**

A

(2) 687D X HH ADVANCE 2322K ET

B

(2) 687D X OSHOTO 316 + (1) 687D X WINCHESTER 1314

126

IVF EMBRYOS

**CHURCHILL LADY 205K**

(5) 205K X BR GKB WINCHESTER 1314

127

IVF EMBRYO

**CHURCHILL LADY 284Z ET**

(1) 284Z X DS 1045 ADVANCE 3575N

128

IVF EMBRYOS

**CHURCHILL LADY 1162Y**

(4) 1162Y X CHURCHILL RED THUNDER 133J

129

IVF EMBRYOS

**CHURCHILL LADY 6230D**

(3) 6230D X H THE PROFIT 8426

130

IVF EMBRYOS

**SRR MISS VALOR 2051 ET**

A

(6) 2051 X CHURCHILL STAMPEDE 486M

B

(2) 2051 X STELLPFLUG GUNSMOKE

131

IVF EMBRYOS

**C 1311 GENESIS GAL 2138 ET**

(4 FEMALE) 2138 X CHURCHILL W4 SHERMAN 2157K



2 IVF EMBRYOS  
**FROM TWO GREAT MATINGS** **132**

(1) BR SHF PRIME DESIGN 5042 9345 X KCF BENNETT MONUMENT J338

(1) JDH AH MS 34X VICTOR 33Z45C X JDH 11B STUD 3134 63E



IVF EMBRYOS  
**CHURCHILL LADY 940G** **133**

(5) 940G X CHURCHILL W4 SHERMAN 2157K **A** ||

(2) 940G X CHURCHILL RED CLOUD 0376H **B** ||



FOREIGN QUALIFIED IVF EMBRYOS  
**CHURCHILL LADY 312L** **134**

(5) 312L X CHURCHILL W4 SHERMAN 2157K ET



FOREIGN QUALIFIED IVF EMBRYOS  
**CHURCHILL LADY 2213K ET** **135**

(5) 2213K X CHURCHILL DESPERADO 029H



IVF EMBRYOS  
**CHURCHILL LADY 7144E** **136**

(2) 7144E X THE PROFIT + (1) 7144E X FRESH PRINCE



IVF EMBRYOS  
**CHURCHILL LADY 8251F** **137**

(3) 8251F X CHURCHILL RED CLOUD 0376H



IVF EMBRYOS  
**CHURCHILL LADY 566C** **138**

(5) 566C X CHURCHILL BROADWAY 858F



IVF EMBRYOS  
**SR CCC LADYSPORT 2205 Z ET** **139**

(6) 2205 X CHURCHILL BROADWAY 858F **A** ||

(4) 2205 X CHURCHILL MAJESTIC 903G **B** ||

(3) 2205 X BLUEPRINT + (2) 2205 X BANKROLL **C** ||





## EMBRYO TANK

# 140

### EMBRYO TANK WITH THE 100+ EMBRYOS INSIDE!

The tank is an XC 43/28. It is a big tank that has been very good for us and will hold around 1,200 straws of semen. It is a long-lasting tank in terms of nitrogen retention.

The 100+ embryos in the tank include both horned and polled embryos created by Churchill Cattle over the years, representing our best ideas at the time. There are also some very current embryos included, mainly in groups of one or two embryos per mating. A list of the embryos in the tank will be available the week before the sale.

One money buys the tank and all 100+ embryos in the tank!

## SEMEN TANK

# 141

### SEMEN TANK WITH 725+ POLLED STRAWS

XC 34/18 semen tank plus 725+ straws of polled semen out of current and former Churchill sires! This tank has been a great storage tank for us. We should have a list of sires in the tank available the week before the sale.

*One money buys the tank and all the semen it contains!*

## SEMEN TANK

# 142

### SEMEN TANK WITH 550+ HORNED STRAWS

Silver MVE A1-40 semen tank plus 550+ straws of horned semen out of current and former Churchill sires! This tank has been very reliable for us for many years. We should have a list of these horned sires available the week before the sale.

*One money buys the tank and all the semen it contains!*





# Future PLANS



## DALE & NANCY VENHUIZEN CHURCHILL CONSULTING

To stay busy, we will be involved in the marketing of semen of six elite herd sires, who you can see on the next spread.

We will also be serving as consultants for customers across the country and enjoying time with our kids and grandkids.



## COLBY & BRIE ATCHISON FOUR DIAMOND LIVESTOCK

After seven years at Churchill, Colby and Brie are starting their own Hereford program, *Four Diamond Livestock*, built on Churchill genetics.

As the volume buyers in our dispersal, they have an outstanding calf crop on the way, with many ET calves arriving spring 2026!



## SHILOH KLEIN MEGAN LEEP & OLIVIA LEEP THREE PEAKS CATTLE

After working at Churchill for the last several years, Shiloh, Megan and Olivia have started their own recip herd.

They are using their many years of experience in working with Trans Ova Genetics to offer high quality pregnant recipis.







## **SEMEN SIRES**



## **OUR PLAN TO KEEP DALE BUSY THIS SPRING**

To give me something to do this spring and in the near future we will be involved in the marketing of semen on these elite herd sires, both horned and polled.

These bulls all will have calves on the ground this spring and we are excited to see them!





## CHURCHILL STAMPEDE 486M ET

SEMEN \$100 • CERTIFICATES \$100 • FOREIGN SEMEN AVAILABLE

CED	BW	WW	YW	SC	MM	UDR	TEAT	CW	REA	MARB	SBMI	SCHB
0.4	1.1	68	105	1.1	33	1.5	1.4	79	.97	.64	489	174
	20	12	18		17	2	15		3	2	6	5



## CHURCHILL W4 SHERMAN 2157K ET

SEMEN \$100 • NON CERTIFICATE • SEXED FEMALE AVAILABLE

CED	BW	WW	YW	SC	MM	UDR	TEAT	CW	REA	MARB	SBMI	SCHB
3.0	0.8	64	100	0.9	25	1.3	1.4	91	1.10	.50	469	185
	16	23				28	15	9	1	4	10	2



## CHURCHILL SMOKEY 3128L ET

SEMEN \$50 • CERTIFICATES \$100 • FOREIGN & FEMALE AVAILABLE

CED	BW	WW	YW	SC	MM	UDR	TEAT	CW	REA	MARB	SBMI	SCHB
3.4	1.2	77	114	1.4	42	1.6	1.6	81	1.17	.41	537	163
	22	2	7	17	1	1	1		1	8	2	8



## STELLPLUG THEN SOME ET

SEMEN AVAILABLE AT AUCTION • CERTIFICATES \$100

CED	BW	WW	YW	SC	MM	UDR	TEAT	CW	REA	MARB	SBMI	SCHB
-0.8	2.7	69	103	1.1	24	1.4	1.4	101	1.08	.20	478	159
	10	22				9	15	2	1		8	10



## CL 1 DOMINO 456M

SEMEN \$50 • CERTIFICATES \$100 • FOREIGN SEMEN AVAILABLE

CED	BW	WW	YW	SC	MM	UDR	TEAT	CW	REA	MARB	SBMI	SCHB
10.0	-0.1	58	98	0.9	31	1.2	1.2	91	.62	.17	479	149
9	9							9			8	17



## CHURCHILL REDWOOD 3408L ET

SEMEN \$50 • CERTIFICATES \$100

CED	BW	WW	YW	SC	MM	UDR	TEAT	CW	REA	MARB	SBMI	SCHB
4.2	1.9	60	92	1.4	41	1.2	1.3	96	.94	.37	498	167
					17	8	2	4	5	10	5	7













# THANK YOU

From the start, we have been blessed with so many people who've helped us be the best we could be. Our parents were our very first encouragers, and we will always be grateful for the foundation they gave us.

Our four daughters grew Churchill Cattle right alongside us, and we couldn't be more thankful for them! We're so proud of the careers they've chosen and the families they are raising — it has been a tremendous joy to watch!

To everyone who have worked alongside us, cheered us on, and supported us through the years, each of you has been exactly the right person we have needed at the time. Your being there for us meant more than words can fully express. We offer our deep and heartfelt thanks! We truly could not have made this journey without each of you and we are so grateful we didn't have to.

As we look ahead, we are filled with gratitude for this journey and excitement for what the future holds!

*Thank you from the bottom of our hearts!*

*Dale + Nancy*







**CHURCHILL CATTLE COMPANY**

Dale & Nancy Venhuizen  
1862 Yadon Rd. Manhattan, MT 59741



**"FINALE 4304M" LOT 01**

**CCC**

**"ARIZONA 589N" LOT 49**

**OUR *Final* WORLD CLASS BULL SALE**